

Datasheet for ABIN653619  
**anti-KCNE1-Like antibody (AA 67-96)**[Go to Product page](#)

## 1 Image

## Overview

Quantity:	400 µL
Target:	KCNE1-Like (KCNE1L)
Binding Specificity:	AA 67-96
Reactivity:	Human
Host:	Rabbit
Clonality:	Polyclonal
Conjugate:	This KCNE1-Like antibody is un-conjugated
Application:	Western Blotting (WB)

## Product Details

Immunogen:	This KCE1L antibody is generated from rabbits immunized with a KLH conjugated synthetic peptide between 67-96 amino acids from the Central region of human KCE1L.
Clone:	RB24387
Isotype:	Ig Fraction
Purification:	This antibody is purified through a protein A column, followed by peptide affinity purification.

## Target Details

Target:	KCNE1-Like (KCNE1L)
Alternative Name:	KCE1L ( <a href="#">KCNE1L Products</a> )
Background:	Voltage-gated potassium (Kv) channels represent the most complex class of voltage-gated ion

## Target Details

channels from both functional and structural standpoints. Their diverse functions include regulating neurotransmitter release, heart rate, insulin secretion, neuronal excitability, epithelial electrolyte transport, smooth muscle contraction, and cell volume. This gene encodes a membrane protein which has sequence similarity to the KCNE1 gene product, a member of the potassium channel, voltage-gated, isk-related subfamily. This intronless gene is deleted in AMME contiguous gene syndrome and may be involved in the cardiac and neurologic abnormalities found in the AMME contiguous gene syndrome.

Molecular Weight: 14993

Gene ID: 23630

NCBI Accession: [NP\\_036414](#)

UniProt: [Q9UJ90](#)

## Application Details

Application Notes: WB: 1:1000

Restrictions: For Research Use only

## Handling

Format: Liquid

Buffer: Purified polyclonal antibody supplied in PBS with 0.09 % (W/V) sodium azide.

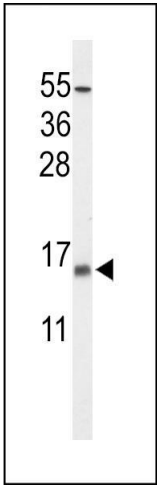
Preservative: Sodium azide

Precaution of Use: This product contains Sodium azide: a POISONOUS AND HAZARDOUS SUBSTANCE which should be handled by trained staff only.

Storage: 4 °C, -20 °C

Storage Comment: Maintain refrigerated at 2-8 °C for up to 6 months. For long term storage store at -20 °C in small aliquots to prevent freeze-thaw cycles.

Expiry Date: 6 months



Western Blotting

**Image 1.** Western blot analysis of KCE1L Antibody (Center) (ABIN653619 and ABIN2842976) in NCI- cell line lysates (35 µg/lane). KCE1L (arrow) was detected using the purified Pab.