

Datasheet for ABIN653623
anti-TBCE antibody (AA 364-392)[Go to Product page](#)

1 Image

Overview

Quantity:	400 µL
Target:	TBCE
Binding Specificity:	AA 364-392
Reactivity:	Human
Host:	Rabbit
Clonality:	Polyclonal
Conjugate:	This TBCE antibody is un-conjugated
Application:	Western Blotting (WB)

Product Details

Immunogen:	This TBCE antibody is generated from rabbits immunized with a KLH conjugated synthetic peptide between 364-392 amino acids from the Central region of human TBCE.
Clone:	RB24405
Isotype:	Ig Fraction
Purification:	This antibody is purified through a protein A column, followed by peptide affinity purification.

Target Details

Target:	TBCE
Alternative Name:	TBCE (TBCE Products)
Background:	Cofactor E is one of four proteins (cofactors A, D, E, and C) involved in the pathway leading to

Target Details

correctly folded beta-tubulin from folding intermediates. Cofactors A and D are believed to play a role in capturing and stabilizing beta-tubulin intermediates in a quasi-native confirmation. Cofactor E binds to the cofactor D/beta-tubulin complex, interaction with cofactor C then causes the release of beta-tubulin polypeptides that are committed to the native state.

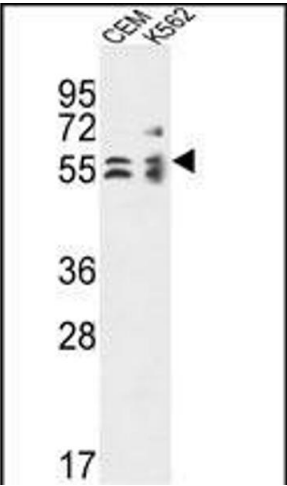
Molecular Weight:	59346
Gene ID:	6905
NCBI Accession:	NP_001072983 , NP_003184
UniProt:	Q15813

Application Details

Application Notes:	WB: 1:1000
Restrictions:	For Research Use only

Handling

Format:	Liquid
Buffer:	Purified polyclonal antibody supplied in PBS with 0.09 % (W/V) sodium azide.
Preservative:	Sodium azide
Precaution of Use:	This product contains Sodium azide: a POISONOUS AND HAZARDOUS SUBSTANCE which should be handled by trained staff only.
Storage:	4 °C,-20 °C
Storage Comment:	Maintain refrigerated at 2-8 °C for up to 6 months. For long term storage store at -20 °C in small aliquots to prevent freeze-thaw cycles.
Expiry Date:	6 months



Western Blotting

Image 1. TBCE Antibody (Center) (ABIN653623 and ABIN2842978) western blot analysis in CEM,K562 cell line lysates (35 µg/lane).This demonstrates the TBCE antibody detected the TBCE protein (arrow).