

Datasheet for ABIN653629
anti-UFL1 antibody (AA 426-455)[Go to Product page](#)

1 Image

Overview

Quantity:	400 µL
Target:	UFL1
Binding Specificity:	AA 426-455
Reactivity:	Human
Host:	Rabbit
Clonality:	Polyclonal
Conjugate:	This UFL1 antibody is un-conjugated
Application:	Western Blotting (WB)

Product Details

Immunogen:	This K0776 antibody is generated from rabbits immunized with a KLH conjugated synthetic peptide between 426-455 amino acids from the Central region of human K0776.
Clone:	RB24469
Isotype:	Ig Fraction
Predicted Reactivity:	Rat
Purification:	This antibody is purified through a protein A column, followed by peptide affinity purification.

Target Details

Target:	UFL1
Alternative Name:	K0776 (UFL1 Products)

Target Details

Molecular Weight:	89595
Gene ID:	23376
NCBI Accession:	NP_056138
UniProt:	O94874

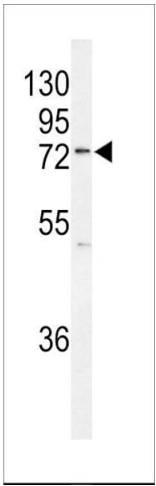
Application Details

Application Notes:	WB: 1:1000
Restrictions:	For Research Use only

Handling

Format:	Liquid
Buffer:	Purified polyclonal antibody supplied in PBS with 0.09 % (W/V) sodium azide.
Preservative:	Sodium azide
Precaution of Use:	This product contains Sodium azide: a POISONOUS AND HAZARDOUS SUBSTANCE which should be handled by trained staff only.
Storage:	4 °C, -20 °C
Storage Comment:	Maintain refrigerated at 2-8 °C for up to 6 months. For long term storage store at -20 °C in small aliquots to prevent freeze-thaw cycles.
Expiry Date:	6 months

Images



Western Blotting

Image 1. Western blot analysis of Antibody (Center) (ABIN653629 and ABIN2842981) in MCF-7 cell line lysates (35 µg/lane). (arrow) was detected using the purified Pab.