



[Go to Product page](#)

Datasheet for ABIN653630
anti-POGLUT1 antibody (C-Term)

1 Image

Overview

Quantity:	400 µL
Target:	POGLUT1
Binding Specificity:	AA 353-382, C-Term
Reactivity:	Human
Host:	Rabbit
Clonality:	Polyclonal
Conjugate:	This POGLUT1 antibody is un-conjugated
Application:	Western Blotting (WB)

Product Details

Immunogen:	This KTEL1 antibody is generated from rabbits immunized with a KLH conjugated synthetic peptide between 353-382 amino acids from the C-terminal region of human KTEL1.
Clone:	RB24472
Isotype:	Ig Fraction
Predicted Reactivity:	B
Purification:	This antibody is purified through a protein A column, followed by peptide affinity purification.

Target Details

Target:	POGLUT1
Alternative Name:	KTEL1 (POGLUT1 Products)

Target Details

Molecular Weight: 46189

Gene ID: 56983

NCBI Accession: [NP_689518](#)

UniProt: [Q8NBL1](#)

Pathways: [Notch Signaling](#)

Application Details

Application Notes: WB: 1:1000

Restrictions: For Research Use only

Handling

Format: Liquid

Buffer: Purified polyclonal antibody supplied in PBS with 0.09 % (W/V) sodium azide.

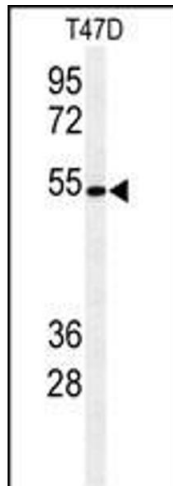
Preservative: Sodium azide

Precaution of Use: This product contains Sodium azide: a POISONOUS AND HAZARDOUS SUBSTANCE which should be handled by trained staff only.

Storage: 4 °C,-20 °C

Storage Comment: Maintain refrigerated at 2-8 °C for up to 6 months. For long term storage store at -20 °C in small aliquots to prevent freeze-thaw cycles.

Expiry Date: 6 months



Western Blotting

Image 1. Western blot analysis of KTEL1 Antibody (C-term) (ABIN653630 and ABIN2842982) in T47D cell line lysates (35 µg/lane). KTEL1 (arrow) was detected using the purified Pab.