

Datasheet for ABIN653648

anti-Cytokeratin 1 antibody (AA 415-443)

3 Images

1 Publication

[Go to Product page](#)

Overview

Quantity:	400 µL
Target:	Cytokeratin 1 (KRT1)
Binding Specificity:	AA 415-443
Reactivity:	Human
Host:	Rabbit
Clonality:	Polyclonal
Conjugate:	This Cytokeratin 1 antibody is un-conjugated
Application:	Western Blotting (WB), Immunohistochemistry (Paraffin-embedded Sections) (IHC (p)), Flow Cytometry (FACS)

Product Details

Immunogen:	This KRT1 antibody is generated from rabbits immunized with a KLH conjugated synthetic peptide between 415-443 amino acids from the Central region of human KRT1.
Clone:	RB18411
Isotype:	Ig Fraction
Purification:	This antibody is prepared by Saturated Ammonium Sulfate (SAS) precipitation followed by dialysis against PBS.

Target Details

Target:	Cytokeratin 1 (KRT1)
Alternative Name:	KRT1 (KRT1 Products)

Target Details

Background:	KRT1 is a member of the keratin gene family. The type II cytokeratins consist of basic or neutral proteins which are arranged in pairs of heterotypic keratin chains coexpressed during differentiation of simple and stratified epithelial tissues. This type II cytokeratin is specifically expressed in the spinous and granular layers of the epidermis with family member KRT10 and mutations in these genes have been associated with bullous congenital ichthyosiform erythroderma.
Molecular Weight:	66039
Gene ID:	3848
NCBI Accession:	NP_006112
UniProt:	P04264

Application Details

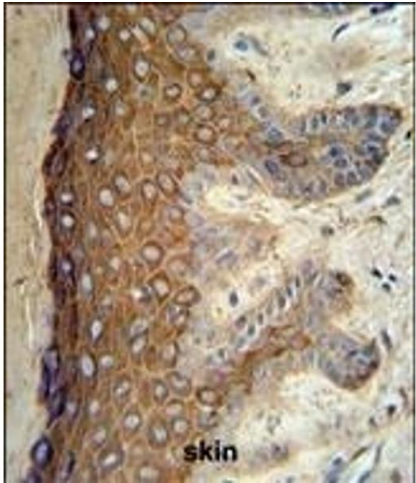
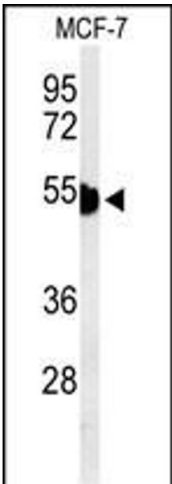
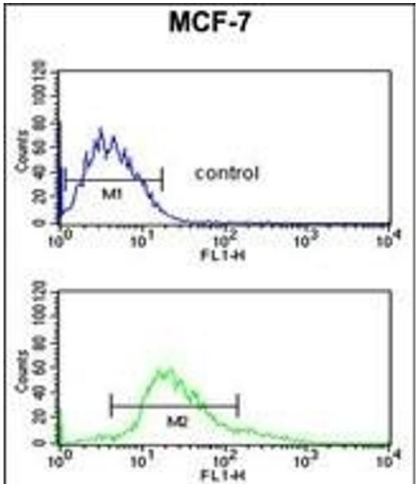
Application Notes:	WB: 1:1000. IHC-P: 1:50~100. FC: 1:10~50
Restrictions:	For Research Use only

Handling

Format:	Liquid
Buffer:	Purified polyclonal antibody supplied in PBS with 0.09 % (W/V) sodium azide.
Preservative:	Sodium azide
Precaution of Use:	This product contains Sodium azide: a POISONOUS AND HAZARDOUS SUBSTANCE which should be handled by trained staff only.
Storage:	4 °C, -20 °C
Storage Comment:	Maintain refrigerated at 2-8 °C for up to 6 months. For long term storage store at -20 °C in small aliquots to prevent freeze-thaw cycles.
Expiry Date:	6 months

Publications

Product cited in:	Han, Rha, Chi: "MED25 is a mediator component of HNF4α-driven transcription leading to insulin secretion in pancreatic beta-cells." in: PLoS ONE , Vol. 7, Issue 8, pp. e44007, (2013) (PubMed).
-------------------	---



Flow Cytometry

Image 1. KRT1 Antibody (Center) (ABIN653648 and ABIN2842989) flow cytometric analysis of MCF-7 cells (bottom histogram) compared to a negative control cell (top histogram). FITC-conjugated goat-anti-rabbit secondary antibodies were used for the analysis.

Western Blotting

Image 2. Western blot analysis of KRT1 Antibody (Center) (ABIN653648 and ABIN2842989) in MCF-7 cell line lysates (35 µg/lane). KRT1 (arrow) was detected using the purified Pab.

Immunohistochemistry (Paraffin-embedded Sections)

Image 3. KRT1 Antibody (Center) (ABIN653648 and ABIN2842989) IHC analysis in formalin fixed and paraffin embedded skin tissue followed by peroxidase conjugation of the secondary antibody and DAB staining. This data demonstrates the use of the KRT1 Antibody (Center) for immunohistochemistry. Clinical relevance has not been evaluated.