

Datasheet for ABIN653653
anti-HFE2 antibody (AA 134-162)[Go to Product page](#)

2 Images

Overview

Quantity:	400 µL
Target:	HFE2
Binding Specificity:	AA 134-162
Reactivity:	Human
Host:	Rabbit
Clonality:	Polyclonal
Conjugate:	This HFE2 antibody is un-conjugated
Application:	Western Blotting (WB), Immunohistochemistry (Paraffin-embedded Sections) (IHC (p))

Product Details

Immunogen:	This HFE2 antibody is generated from rabbits immunized with a KLH conjugated synthetic peptide between 134-162 amino acids from the Central region of human HFE2.
Clone:	RB22184
Isotype:	Ig Fraction
Purification:	This antibody is purified through a protein A column, followed by peptide affinity purification.

Target Details

Target:	HFE2
Alternative Name:	HFE2 (HFE2 Products)
Background:	HFE2 is involved in iron metabolism. It may be a component of the signaling pathway which

Target Details

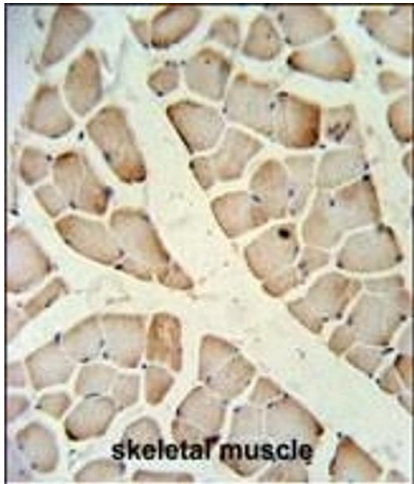
	activates hepcidin or it may act as a modulator of hepcidin expression. It could also represent the cellular receptor for hepcidin.
Molecular Weight:	45080
Gene ID:	148738
NCBI Accession:	NP_660320 , NP_973733 , NP_998817 , NP_998818
UniProt:	Q6ZVN8
Pathways:	Transition Metal Ion Homeostasis

Application Details

Application Notes:	WB: 1:1000. IHC-P: 1:50~100
Restrictions:	For Research Use only

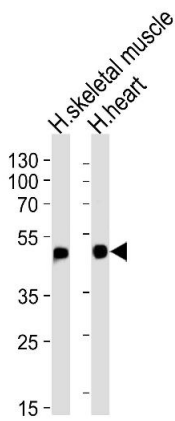
Handling

Format:	Liquid
Buffer:	Purified polyclonal antibody supplied in PBS with 0.09 % (W/V) sodium azide.
Preservative:	Sodium azide
Precaution of Use:	This product contains Sodium azide: a POISONOUS AND HAZARDOUS SUBSTANCE which should be handled by trained staff only.
Storage:	4 °C, -20 °C
Storage Comment:	Maintain refrigerated at 2-8 °C for up to 6 months. For long term storage store at -20 °C in small aliquots to prevent freeze-thaw cycles.
Expiry Date:	6 months



Immunohistochemistry (Paraffin-embedded Sections)

Image 1. HFE2 Antibody (Center) (ABIN653653 and ABIN2842994) IHC analysis in formalin fixed and paraffin embedded skeletal muscle followed by peroxidase conjugation of the secondary antibody and DAB staining. This data demonstrates the use of the HFE2 Antibody (Center) for immunohistochemistry. Clinical relevance has not been evaluated.



Western Blotting

Image 2. Western blot analysis of lysates from human skeletal muscle and heart tissue lysates (from left to right), using HFE2 Antibody (Center) (ABIN653653 and ABIN2842994). (ABIN653653 and ABIN2842994) was diluted at 1:1000 at each lane. A goat anti-rabbit IgG H&L(HRP) at 1:5000 dilution was used as the secondary antibody. Lysates at 35 µg per lane.