

Datasheet for ABIN653654
anti-ABHD14B antibody (C-Term)[Go to Product page](#)

3 Images

Overview

Quantity:	400 µL
Target:	ABHD14B
Binding Specificity:	AA 150-179, C-Term
Reactivity:	Human
Host:	Rabbit
Clonality:	Polyclonal
Conjugate:	This ABHD14B antibody is un-conjugated
Application:	Western Blotting (WB), Flow Cytometry (FACS), Immunohistochemistry (Paraffin-embedded Sections) (IHC (p))

Product Details

Immunogen:	This ABHEB antibody is generated from rabbits immunized with a KLH conjugated synthetic peptide between 150-179 amino acids from the C-terminal region of human ABHEB.
Clone:	RB22194
Isotype:	Ig Fraction
Predicted Reactivity:	B
Purification:	This antibody is purified through a protein A column, followed by peptide affinity purification.

Target Details

Target:	ABHD14B
---------	---------

Target Details

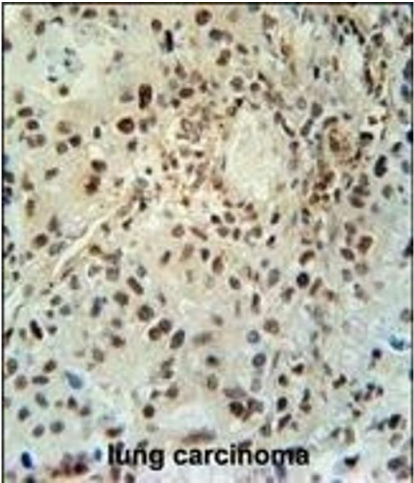
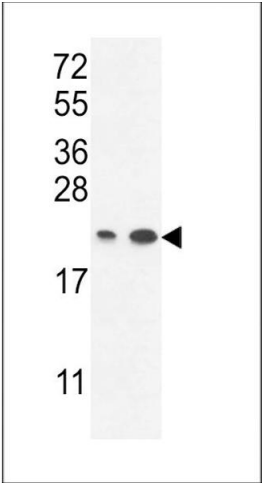
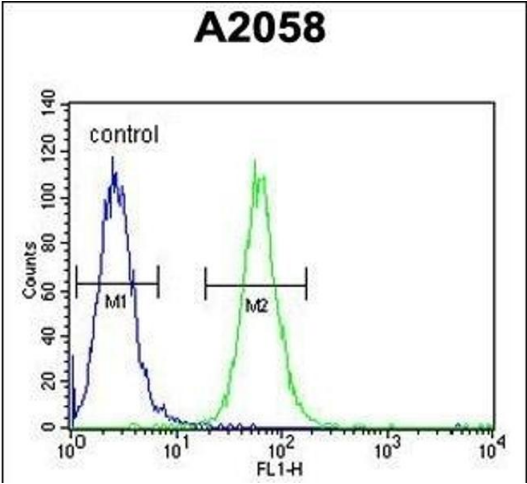
Alternative Name:	ABHEB (ABHD14B Products)
Background:	ABHEB has hydrolase activity towards p-nitrophenyl butyrate (in vitro). It may activate transcription.
Molecular Weight:	22346
Gene ID:	84836
NCBI Accession:	NP_001139786 , NP_001241682 , NP_116139
UniProt:	Q96IU4

Application Details

Application Notes:	WB: 1:1000. IHC-P: 1:50~100. FC: 1:10~50
Restrictions:	For Research Use only

Handling

Format:	Liquid
Buffer:	Purified polyclonal antibody supplied in PBS with 0.09 % (W/V) sodium azide.
Preservative:	Sodium azide
Precaution of Use:	This product contains Sodium azide: a POISONOUS AND HAZARDOUS SUBSTANCE which should be handled by trained staff only.
Storage:	4 °C,-20 °C
Storage Comment:	Maintain refrigerated at 2-8 °C for up to 6 months. For long term storage store at -20 °C in small aliquots to prevent freeze-thaw cycles.
Expiry Date:	6 months



Flow Cytometry

Image 1. ABHEB Antibody (C-term) (ABIN653654 and ABIN2842995) flow cytometric analysis of cells (right histogram) compared to a negative control cell (left histogram). FITC-conjugated goat-anti-rabbit secondary antibodies were used for the analysis.

Western Blotting

Image 2. ABHEB Antibody (C-term) (ABIN653654 and ABIN2842995) western blot analysis in T47D cell line lysates (35 μ g/lane). This demonstrates the ABHEB antibody detected the ABHEB protein (arrow).

Immunohistochemistry (Paraffin-embedded Sections)

Image 3. ABHEB Antibody (C-term) (ABIN653654 and ABIN2842995) immunohistochemistry analysis in formalin fixed and paraffin embedded human lung carcinoma followed by peroxidase conjugation of the secondary antibody and DAB staining. This data demonstrates the use of the ABHEB Antibody (C-term) for immunohistochemistry. Clinical relevance has not been evaluated.