



[Go to Product page](#)

Datasheet for ABIN653657
anti-INSC antibody (AA 410-437)

2 Images

Overview

Quantity:	400 µL
Target:	INSC
Binding Specificity:	AA 410-437
Reactivity:	Human
Host:	Rabbit
Clonality:	Polyclonal
Conjugate:	This INSC antibody is un-conjugated
Application:	Western Blotting (WB), Immunohistochemistry (Paraffin-embedded Sections) (IHC (p))

Product Details

Immunogen:	This INSC antibody is generated from rabbits immunized with a KLH conjugated synthetic peptide between 410-437 amino acids from the Central region of human INSC.
Clone:	RB22206
Isotype:	Ig Fraction
Predicted Reactivity:	M
Purification:	This antibody is purified through a protein A column, followed by peptide affinity purification.

Target Details

Target:	INSC
Alternative Name:	INSC (INSC Products)

Target Details

Background: In *Drosophila*, neuroblasts divide asymmetrically into another neuroblast at the apical side and a smaller ganglion mother cell on the basal side. Cell polarization is precisely regulated by 2 apically localized multiprotein signaling complexes that are tethered by Inscuteable, which regulates their apical localization (Izaki et al., 2006 [PubMed 16458856]).

Molecular Weight: 63469

Gene ID: 387755

NCBI Accession: [NP_001027024](#), [NP_001036001](#), [NP_001265242](#), [NP_001265243](#), [NP_001265244](#),
[NP_001265245](#)

UniProt: [Q1MX18](#)

Application Details

Application Notes: WB: 1:1000. IHC-P: 1:50~100

Restrictions: For Research Use only

Handling

Format: Liquid

Buffer: Purified polyclonal antibody supplied in PBS with 0.09 % (W/V) sodium azide.

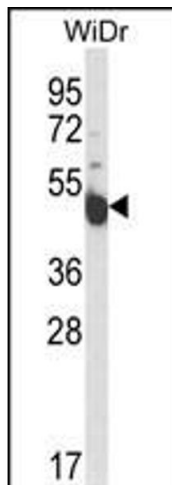
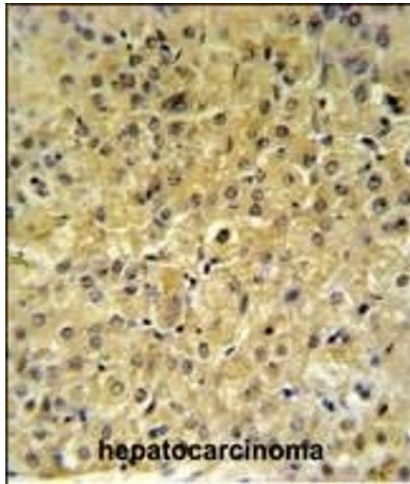
Preservative: Sodium azide

Precaution of Use: This product contains Sodium azide: a POISONOUS AND HAZARDOUS SUBSTANCE which should be handled by trained staff only.

Storage: 4 °C, -20 °C

Storage Comment: Maintain refrigerated at 2-8 °C for up to 6 months. For long term storage store at -20 °C in small aliquots to prevent freeze-thaw cycles.

Expiry Date: 6 months



Immunohistochemistry (Paraffin-embedded Sections)

Image 1. INSC Antibody (Center) (ABIN653657 and ABIN2842997) IHC analysis in formalin fixed and paraffin embedded hepatocarcinoma followed by peroxidase conjugation of the secondary antibody and DAB staining. This data demonstrates the use of the INSC Antibody (Center) for immunohistochemistry. Clinical relevance has not been evaluated.

Western Blotting

Image 2. Western blot analysis of INSC Antibody (Center) (ABIN653657 and ABIN2842997) in WiDr cell line lysates (35 µg/lane). INSC (arrow) was detected using the purified Pab.