

Datasheet for ABIN653670
anti-SLC25A37 antibody (C-Term)[Go to Product page](#)

4 Images

Overview

Quantity:	400 µL
Target:	SLC25A37
Binding Specificity:	AA 309-338, C-Term
Reactivity:	Human, Rat
Host:	Rabbit
Clonality:	Polyclonal
Conjugate:	This SLC25A37 antibody is un-conjugated
Application:	Western Blotting (WB), Flow Cytometry (FACS), Immunohistochemistry (Paraffin-embedded Sections) (IHC (p)), Immunofluorescence (IF)

Product Details

Immunogen:	This SLC25A37 antibody is generated from rabbits immunized with a KLH conjugated synthetic peptide between 309-338 amino acids from the C-terminal region of human SLC25A37.
Clone:	RB24153
Isotype:	Ig Fraction
Purification:	This antibody is purified through a protein A column, followed by peptide affinity purification.

Target Details

Target:	SLC25A37
Alternative Name:	SLC25A37 (SLC25A37 Products)

Target Details

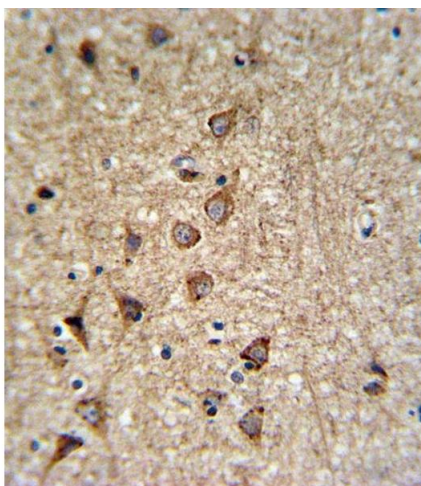
Background:	SLC25A37 belongs to the SLC25 family of mitochondrial carrier proteins (Haitina et al., 2006 [PubMed 16949250]).[supplied by OMIM].
Molecular Weight:	37323
Gene ID:	51312
NCBI Accession:	NP_057696
UniProt:	Q9NYZ2
Pathways:	Transition Metal Ion Homeostasis

Application Details

Application Notes:	IF: 1:25. WB: 1:1000. IHC-P: 1:10~50. FC: 1:10~50
Restrictions:	For Research Use only

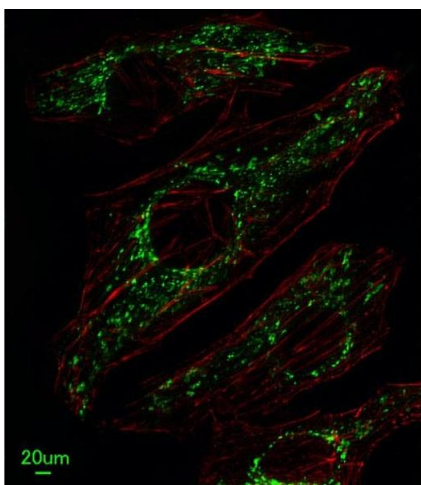
Handling

Format:	Liquid
Buffer:	Purified polyclonal antibody supplied in PBS with 0.09 % (W/V) sodium azide.
Preservative:	Sodium azide
Precaution of Use:	This product contains Sodium azide: a POISONOUS AND HAZARDOUS SUBSTANCE which should be handled by trained staff only.
Storage:	4 °C,-20 °C
Storage Comment:	Maintain refrigerated at 2-8 °C for up to 6 months. For long term storage store at -20 °C in small aliquots to prevent freeze-thaw cycles.
Expiry Date:	6 months



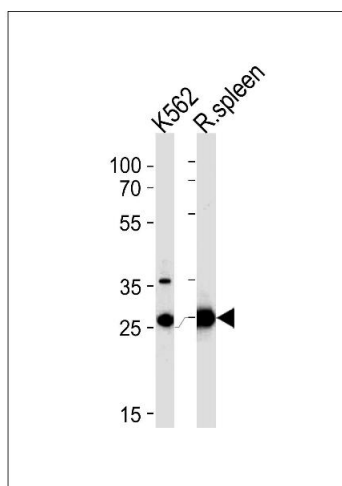
Immunohistochemistry (Paraffin-embedded Sections)

Image 1. SLC25A37 Antibody (C-term) (ABIN653670 and ABIN2843002) IHC analysis in formalin fixed and paraffin embedded brain tissue followed by peroxidase conjugation of the secondary antibody and DAB staining. This data demonstrates the use of the SLC25A37 Antibody (C-term) for immunohistochemistry. Clinical relevance has not been evaluated.



Immunofluorescence

Image 2. Immunofluorescent analysis of HeLa cells, using SLC25A37 Antibody (C-term) (ABIN653670 and ABIN2843002). (ABIN653670 and ABIN2843002) was diluted at 1:25 dilution. Alexa Fluor 488-conjugated goat anti-rabbit IgG at 1:400 dilution was used as the secondary antibody (green). Cytoplasmic actin was counterstained with Dylight Fluor® 554 (red) conjugated Phalloidin (red).



Western Blotting

Image 3. SLC25A37 Antibody (C-term) (ABIN653670 and ABIN2843002) western blot analysis in K562 cell line and rat spleen tissue lysates (35 µg/lane). This demonstrates the SLC25A37 antibody detected the SLC25A37 protein (arrow).

Please check the [product details page](#) for more images. Overall 4 images are available for ABIN653670.