

Datasheet for ABIN653675
anti-LRRTM1 antibody (AA 88-117)[Go to Product page](#)

2 Images

Overview

Quantity:	400 µL
Target:	LRRTM1
Binding Specificity:	AA 88-117
Reactivity:	Human, Mouse
Host:	Rabbit
Clonality:	Polyclonal
Conjugate:	This LRRTM1 antibody is un-conjugated
Application:	Western Blotting (WB), Immunohistochemistry (Paraffin-embedded Sections) (IHC (p))

Product Details

Immunogen:	This LRRTM1 antibody is generated from rabbits immunized with a KLH conjugated synthetic peptide between 88-117 amino acids from the Central region of human LRRTM1.
Clone:	RB24182
Isotype:	IgG
Predicted Reactivity:	B, Rat
Purification:	This antibody is purified through a protein A column, followed by peptide affinity purification.

Target Details

Target:	LRRTM1
Alternative Name:	LRRTM1 (LRRTM1 Products)

Target Details

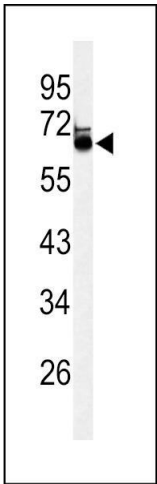
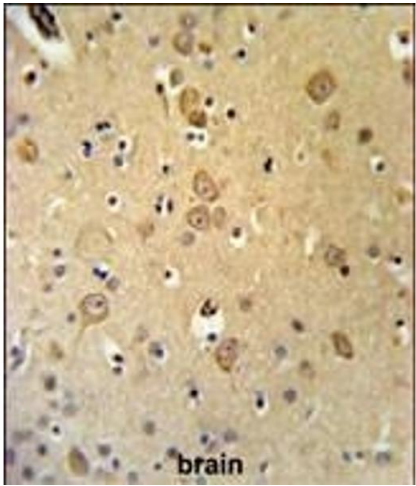
Background:	LRRTM1 may play a role during the development of specific forebrain structures by influencing neuronal differentiation and connectivity, with a possible role in intracellular trafficking within axons.
Molecular Weight:	58641
Gene ID:	347730
NCBI Accession:	NP_849161
UniProt:	Q86UE6
Pathways:	Synaptic Membrane

Application Details

Application Notes:	WB: 1:1000. IHC-P: 1:50~100
Restrictions:	For Research Use only

Handling

Format:	Liquid
Buffer:	Purified polyclonal antibody supplied in PBS with 0.09 % (W/V) sodium azide.
Preservative:	Sodium azide
Precaution of Use:	This product contains Sodium azide: a POISONOUS AND HAZARDOUS SUBSTANCE which should be handled by trained staff only.
Storage:	4 °C,-20 °C
Storage Comment:	Maintain refrigerated at 2-8 °C for up to 6 months. For long term storage store at -20 °C in small aliquots to prevent freeze-thaw cycles.
Expiry Date:	6 months



Immunohistochemistry (Paraffin-embedded Sections)

Image 1. LRRTM1 Antibody (Center) (ABIN653675 and ABIN2843005) IHC analysis in formalin fixed and paraffin embedded brain tissue followed by peroxidase conjugation of the secondary antibody and DAB staining. This data demonstrates the use of the LRRTM1 Antibody (Center) for immunohistochemistry. Clinical relevance has not been evaluated.

Western Blotting

Image 2. Western blot analysis of LRRTM1 Antibody (Center) (ABIN653675 and ABIN2843005) in mouse brain tissue lysates (35 µg/lane). LRRTM1 (arrow) was detected using the purified Pab.