

Datasheet for ABIN653678
anti-ADPRHL2 antibody (N-Term)



[Go to Product page](#)

2 Images

Overview

Quantity:	400 µL
Target:	ADPRHL2
Binding Specificity:	AA 87-114, N-Term
Reactivity:	Human
Host:	Rabbit
Clonality:	Polyclonal
Conjugate:	This ADPRHL2 antibody is un-conjugated
Application:	Western Blotting (WB), Flow Cytometry (FACS)

Product Details

Immunogen:	This ADPRHL2 antibody is generated from rabbits immunized with a KLH conjugated synthetic peptide between 87-114 amino acids from the N-terminal region of human ADPRHL2.
Clone:	RB24239
Isotype:	IgG
Purification:	This antibody is purified through a protein A column, followed by peptide affinity purification.

Target Details

Target:	ADPRHL2
Alternative Name:	ADPRHL2 (ADPRHL2 Products)
Background:	ADPRHL2 is a member of the ADP-ribosylglycohydrolase family. The enzyme catalyzes the

Target Details

removal of ADP-ribose from ADP-ribosylated proteins. This enzyme localizes to the mitochondria, in addition to the nucleus and cytoplasm.

Molecular Weight: 38947

Gene ID: 54936

NCBI Accession: [NP_060295](#)

UniProt: [Q9NX46](#)

Application Details

Application Notes: WB: 1:1000. FC: 1:10~50

Restrictions: For Research Use only

Handling

Format: Liquid

Buffer: Purified polyclonal antibody supplied in PBS with 0.09 % (W/V) sodium azide.

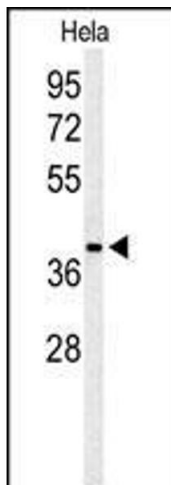
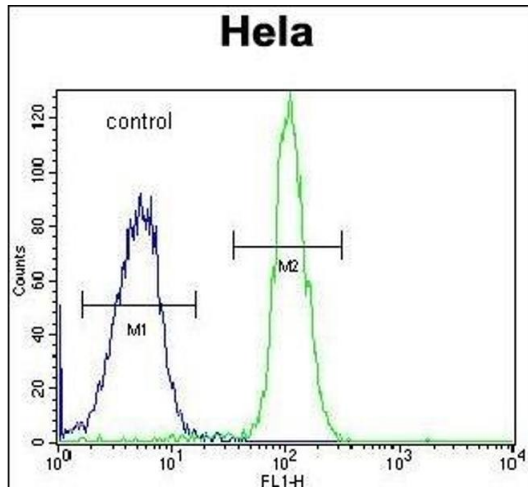
Preservative: Sodium azide

Precaution of Use: This product contains Sodium azide: a POISONOUS AND HAZARDOUS SUBSTANCE which should be handled by trained staff only.

Storage: 4 °C, -20 °C

Storage Comment: Maintain refrigerated at 2-8 °C for up to 6 months. For long term storage store at -20 °C in small aliquots to prevent freeze-thaw cycles.

Expiry Date: 6 months



Flow Cytometry

Image 1. ADPRHL2 Antibody (N-term) (ABIN653678 and ABIN2843006) flow cytometric analysis of HeLa cells (right histogram) compared to a negative control cell (left histogram). FITC-conjugated goat-anti-rabbit secondary antibodies were used for the analysis.

Western Blotting

Image 2. Western blot analysis of ADPRHL2 Antibody (N-term) (ABIN653678 and ABIN2843006) in HeLa cell line lysates (35 µg/lane). ADPRHL2 (arrow) was detected using the purified Pab.