

Datasheet for ABIN653681

anti-RPS24 antibody (AA 65-93)[Go to Product page](#)**2** Images

Overview

Quantity:	400 µL
Target:	RPS24
Binding Specificity:	AA 65-93
Reactivity:	Human
Host:	Rabbit
Clonality:	Polyclonal
Conjugate:	This RPS24 antibody is un-conjugated
Application:	Western Blotting (WB), Flow Cytometry (FACS)

Product Details

Immunogen:	This RPS24 antibody is generated from rabbits immunized with a KLH conjugated synthetic peptide between 65-93 amino acids from the Central region of human RPS24.
Clone:	RB24304
Isotype:	Ig Fraction
Predicted Reactivity:	B, Pr, M, Rat
Purification:	This antibody is purified through a protein A column, followed by peptide affinity purification.

Target Details

Target:	RPS24
Alternative Name:	RPS24 (RPS24 Products)

Target Details

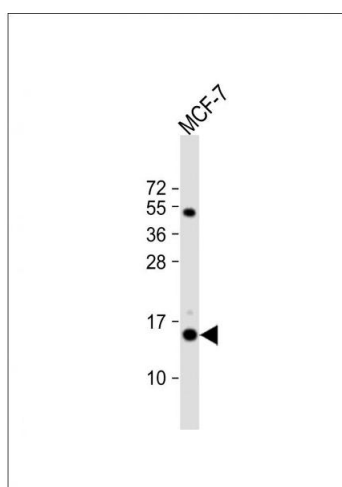
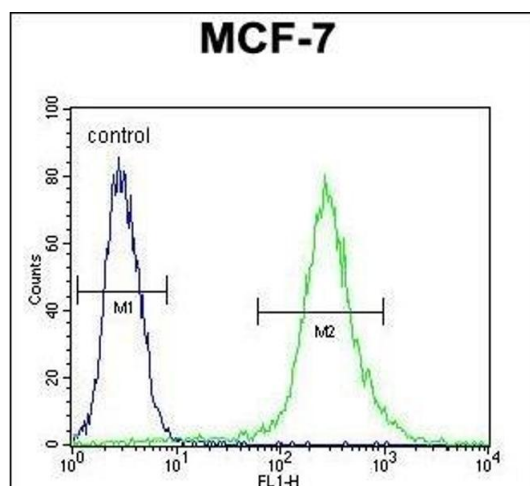
Background:	Ribosomes, the organelles that catalyze protein synthesis, consist of a small 40S subunit and a large 60S subunit. Together these subunits are composed of 4 RNA species and approximately 80 structurally distinct proteins. RPS24 is a ribosomal protein that is a component of the 40S subunit. The protein belongs to the S24E family of ribosomal proteins. It is located in the cytoplasm. Multiple transcript variants encoding different isoforms have been found for this gene. As is typical for genes encoding ribosomal proteins, there are multiple processed pseudogenes of this gene dispersed through the genome.
Molecular Weight:	15423
Gene ID:	6229
NCBI Accession:	NP_001017 , NP_001135755 , NP_001135757 , NP_148982
UniProt:	P62847

Application Details

Application Notes:	WB: 1:1000. FC: 1:10~50
Restrictions:	For Research Use only

Handling

Format:	Liquid
Buffer:	Purified polyclonal antibody supplied in PBS with 0.09 % (W/V) sodium azide.
Preservative:	Sodium azide
Precaution of Use:	This product contains Sodium azide: a POISONOUS AND HAZARDOUS SUBSTANCE which should be handled by trained staff only.
Storage:	4 °C, -20 °C
Storage Comment:	Maintain refrigerated at 2-8 °C for up to 6 months. For long term storage store at -20 °C in small aliquots to prevent freeze-thaw cycles.
Expiry Date:	6 months



Flow Cytometry

Image 1. RPS24 Antibody (Center) (ABIN653681 and ABIN2843008) flow cytometric analysis of MCF-7 cells (right histogram) compared to a negative control cell (left histogram). FITC-conjugated goat-anti-rabbit secondary antibodies were used for the analysis.

Western Blotting

Image 2. Anti-RPS24 Antibody (Center) at 1:1000 dilution + MCF-7 whole cell lysate Lysates/proteins at 20 µg per lane. Secondary Goat Anti-Rabbit IgG, (H+L), Peroxidase conjugated at 1/10000 dilution. Predicted band size : 15 kDa. Blocking/Dilution buffer: 5 % NFDM/TBST.