

Datasheet for ABIN653693  
**anti-DCLRE1C antibody (N-Term)**[Go to Product page](#)

## 2 Images

## Overview

Quantity:	400 µL
Target:	DCLRE1C
Binding Specificity:	AA 21-50, N-Term
Reactivity:	Human, Mouse
Host:	Rabbit
Clonality:	Polyclonal
Conjugate:	This DCLRE1C antibody is un-conjugated
Application:	Western Blotting (WB), Immunohistochemistry (Paraffin-embedded Sections) (IHC (p))

## Product Details

Immunogen:	This DCLRE1C antibody is generated from rabbits immunized with a KLH conjugated synthetic peptide between 21-50 amino acids from the N-terminal region of human DCLRE1C.
Clone:	RB24410
Isotype:	Ig Fraction
Purification:	This antibody is purified through a protein A column, followed by peptide affinity purification.

## Target Details

Target:	DCLRE1C
Alternative Name:	DCLRE1C ( <a href="#">DCLRE1C Products</a> )
Background:	DCLRE1C is a nuclear protein that is involved in V(D)J recombination and DNA repair. The

## Target Details

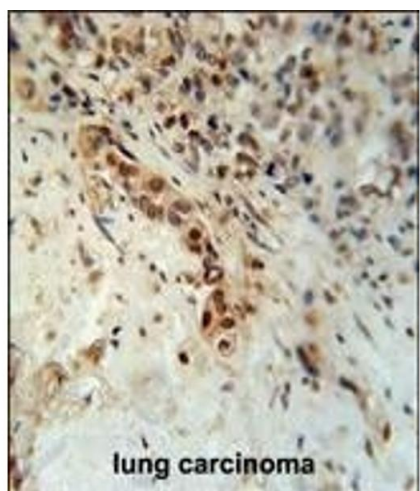
	protein has single-strand-specific 5'-3' exonuclease activity, it also exhibits endonuclease activity on 5' and 3' overhangs and hairpins when complexed with protein kinase, DNA-activated, catalytic polypeptide.
Molecular Weight:	78436
Gene ID:	64421
NCBI Accession:	<a href="#">NP_001029027</a> , <a href="#">NP_001029029</a> , <a href="#">NP_001029030</a> , <a href="#">NP_071932</a>
UniProt:	<a href="#">Q96SD1</a>
Pathways:	<a href="#">DNA Damage Repair</a>

## Application Details

Application Notes:	WB: 1:2000. IHC-P: 1:50~100
Restrictions:	For Research Use only

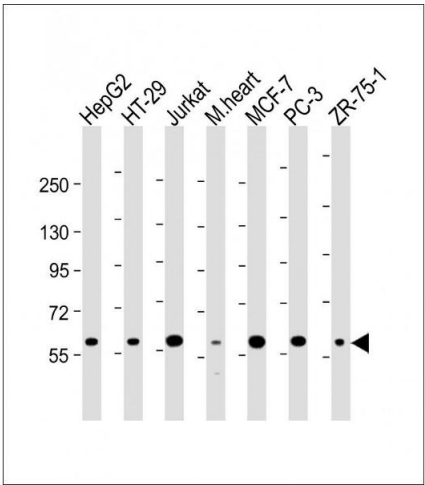
## Handling

Format:	Liquid
Buffer:	Purified polyclonal antibody supplied in PBS with 0.09 % (W/V) sodium azide.
Preservative:	Sodium azide
Precaution of Use:	This product contains Sodium azide: a POISONOUS AND HAZARDOUS SUBSTANCE which should be handled by trained staff only.
Storage:	4 °C,-20 °C
Storage Comment:	Maintain refrigerated at 2-8 °C for up to 6 months. For long term storage store at -20 °C in small aliquots to prevent freeze-thaw cycles.
Expiry Date:	6 months



Immunohistochemistry (Paraffin-embedded Sections)

**Image 1.** DCLRE1C Antibody (N-term) (ABIN653693 and ABIN2843013) immunohistochemistry analysis in formalin fixed and paraffin embedded human lung carcinoma followed by peroxidase conjugation of the secondary antibody and DAB staining. This data demonstrates the use of the DCLRE1C Antibody (N-term) for immunohistochemistry. Clinical relevance has not been evaluated.



Western Blotting

**Image 2.** All lanes : Anti-DCLRE1C Antibody (N-term) at 1:2000 dilution Lane 1: HepG2 whole cell lysate Lane 2: HT-29 whole cell lysate Lane 3: Jurkat whole cell lysate Lane 4: mouse heart lysate Lane 5: MCF-7 whole cell lysate Lane 5: PC-3 whole cell lysate Lane 5: ZR-75-1 whole cell lysate Lysates/proteins at 20 µg per lane. Secondary Goat Anti-Rabbit IgG, (H+L), Peroxidase conjugated at 1/10000 dilution. Predicted band size : 78 kDa Blocking/Dilution buffer: 5 % NFDM/TBST.