

Datasheet for ABIN653696

anti-Sphingomyelin Synthase 2 antibody (C-Term)

3 Images

[Go to Product page](#)

Overview

Quantity:	400 µL
Target:	Sphingomyelin Synthase 2 (SGMS2)
Binding Specificity:	AA 338-365, C-Term
Reactivity:	Human, Mouse
Host:	Rabbit
Clonality:	Polyclonal
Conjugate:	This Sphingomyelin Synthase 2 antibody is un-conjugated
Application:	Western Blotting (WB)

Product Details

Immunogen:	This SGMS2 antibody is generated from rabbits immunized with a KLH conjugated synthetic peptide between 338-365 amino acids from the C-terminal region of human SGMS2.
Clone:	RB24438
Isotype:	Ig Fraction
Predicted Reactivity:	Pr, Rat
Purification:	This antibody is purified through a protein A column, followed by peptide affinity purification.

Target Details

Target:	Sphingomyelin Synthase 2 (SGMS2)
Alternative Name:	SGMS2 (SGMS2 Products)

Target Details

Background: Sphingomyelin, a major component of cell and Golgi membranes, is made by the transfer of phosphocholine from phosphatidylcholine onto ceramide, with diacylglycerol as a side product. SGMS2 is an enzyme that catalyzes this reaction primarily at the cell membrane. The synthesis is reversible, and this enzyme can catalyze the reaction in either direction. This protein is required for cell growth.

Molecular Weight: 42280

Gene ID: 166929

NCBI Accession: [NP_001129729](#), [NP_001129730](#), [NP_689834](#)

UniProt: [Q8NHU3](#)

Application Details

Application Notes: WB: 1:1000. WB: 1:1000. WB: 1:1000

Restrictions: For Research Use only

Handling

Format: Liquid

Buffer: Purified polyclonal antibody supplied in PBS with 0.09 % (W/V) sodium azide.

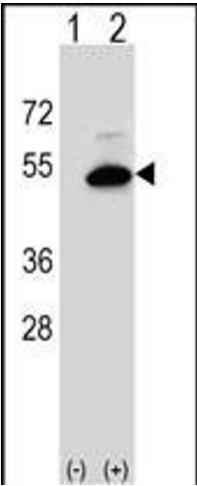
Preservative: Sodium azide

Precaution of Use: This product contains Sodium azide: a POISONOUS AND HAZARDOUS SUBSTANCE which should be handled by trained staff only.

Storage: 4 °C,-20 °C

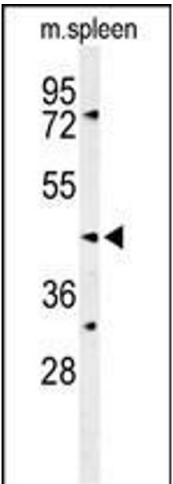
Storage Comment: Maintain refrigerated at 2-8 °C for up to 6 months. For long term storage store at -20 °C in small aliquots to prevent freeze-thaw cycles.

Expiry Date: 6 months



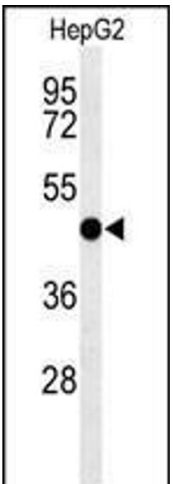
Western Blotting

Image 1. Western blot analysis of SGMS2 (arrow) using rabbit polyclonal SGMS2 Antibody (C-term) (ABIN653696 and ABIN2843015). 293 cell lysates (2 µg/lane) either nontransfected (Lane 1) or transiently transfected (Lane 2) with the SGMS2 gene.



Western Blotting

Image 2. Western blot analysis of SGMS2 Antibody (C-term) (ABIN653696 and ABIN2843015) in mouse spleen tissue lysates (35 µg/lane). SGMS2 (arrow) was detected using the purified Pab.



Western Blotting

Image 3. Western blot analysis of SGMS2 Antibody (C-term) (ABIN653696 and ABIN2843015) in HepG2 cell line lysates (35 µg/lane). SGMS2 (arrow) was detected using the purified Pab.