



Datasheet for ABIN653700  
**anti-NAP1L5 antibody (AA 82-111)**



[Go to Product page](#)

1 Image

Overview

Quantity:	400 µL
Target:	NAP1L5
Binding Specificity:	AA 82-111
Reactivity:	Human, Mouse
Host:	Rabbit
Clonality:	Polyclonal
Conjugate:	This NAP1L5 antibody is un-conjugated
Application:	Western Blotting (WB)

Product Details

Immunogen:	This NP1L5 antibody is generated from rabbits immunized with a KLH conjugated synthetic peptide between 82-111 amino acids from the Central region of human NP1L5.
Clone:	RB24457
Isotype:	Ig Fraction
Predicted Reactivity:	B, Rat
Purification:	This antibody is purified through a protein A column, followed by peptide affinity purification.

Target Details

Target:	NAP1L5
Alternative Name:	NP1L5 ( <a href="#">NAP1L5 Products</a> )

## Target Details

Molecular Weight:	19593
Gene ID:	266812
NCBI Accession:	<a href="#">NP_715638</a>
UniProt:	<a href="#">Q96NT1</a>

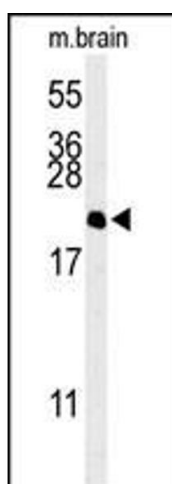
## Application Details

Application Notes:	WB: 1:1000
Restrictions:	For Research Use only

## Handling

Format:	Liquid
Buffer:	Purified polyclonal antibody supplied in PBS with 0.09 % (W/V) sodium azide.
Preservative:	Sodium azide
Precaution of Use:	This product contains Sodium azide: a POISONOUS AND HAZARDOUS SUBSTANCE which should be handled by trained staff only.
Storage:	4 °C,-20 °C
Storage Comment:	Maintain refrigerated at 2-8 °C for up to 6 months. For long term storage store at -20 °C in small aliquots to prevent freeze-thaw cycles.
Expiry Date:	6 months

## Images



### Western Blotting

**Image 1.** Western blot analysis of NP1L5 Antibody (center) (ABIN653700 and ABIN2843018) in mouse brain tissue lysates (35 µg/lane). NP1L5 (arrow) was detected using the purified Pab.