

Datasheet for ABIN653701
anti-LYPD1 antibody (C-Term)[Go to Product page](#)

3 Images

Overview

Quantity:	400 µL
Target:	LYPD1
Binding Specificity:	AA 93-122, C-Term
Reactivity:	Human, Mouse
Host:	Rabbit
Clonality:	Polyclonal
Conjugate:	This LYPD1 antibody is un-conjugated
Application:	Western Blotting (WB), Immunohistochemistry (Paraffin-embedded Sections) (IHC (p))

Product Details

Immunogen:	This LYPD1 antibody is generated from rabbits immunized with a KLH conjugated synthetic peptide between 93-122 amino acids from the C-terminal region of human LYPD1.
Clone:	RB24459
Isotype:	Ig Fraction
Purification:	This antibody is purified through a protein A column, followed by peptide affinity purification.

Target Details

Target:	LYPD1
Alternative Name:	LYPD1 (LYPD1 Products)
Molecular Weight:	15240

Target Details

Gene ID:	116372
NCBI Accession:	NP_001070895 , NP_653187
UniProt:	Q8N2G4

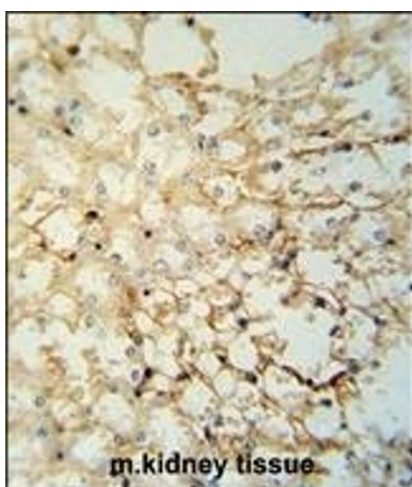
Application Details

Application Notes:	WB: 1:1000. WB: 1:1000. IHC-P: 1:50~100
Restrictions:	For Research Use only

Handling

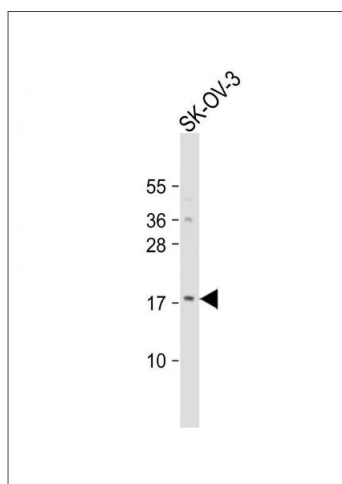
Format:	Liquid
Buffer:	Purified polyclonal antibody supplied in PBS with 0.09 % (W/V) sodium azide.
Preservative:	Sodium azide
Precaution of Use:	This product contains Sodium azide: a POISONOUS AND HAZARDOUS SUBSTANCE which should be handled by trained staff only.
Storage:	4 °C,-20 °C
Storage Comment:	Maintain refrigerated at 2-8 °C for up to 6 months. For long term storage store at -20 °C in small aliquots to prevent freeze-thaw cycles.
Expiry Date:	6 months

Images



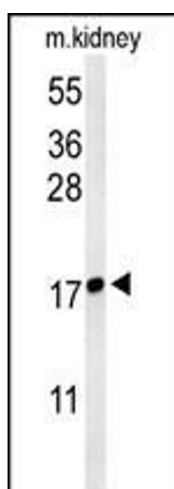
Immunohistochemistry (Paraffin-embedded Sections)

Image 1. LYPD1 Antibody (C-term) (ABIN653701 and ABIN2843019) immunohistochemistry analysis in formalin fixed and paraffin embedded mouse kidney tissue followed by peroxidase conjugation of the secondary antibody and DAB staining. This data demonstrates the use of the LYPD1 Antibody (C-term) for immunohistochemistry. Clinical relevance has not been evaluated.



Western Blotting

Image 2. Anti-LYPD1 Antibody (C-term) at 1:1000 dilution + SK-OV-3 whole cell lysate. Lysates/proteins at 20 µg per lane. Secondary Goat Anti-Rabbit IgG, (H+L), Peroxidase conjugated at 1/10000 dilution. Predicted band size : 15 kDa. Blocking/Dilution buffer: 5 % NFDM/TBST.



Western Blotting

Image 3. Western blot analysis of LYPD1 Antibody (C-term) (ABIN653701 and ABIN2843019) in mouse kidney tissue lysates (35 µg/lane). LYPD1 (arrow) was detected using the purified Pab.