

Datasheet for ABIN653704  
**anti-PRUNE antibody (C-Term)**

## 3 Images

[Go to Product page](#)

## Overview

Quantity:	400 µL
Target:	PRUNE
Binding Specificity:	AA 360-389, C-Term
Reactivity:	Human
Host:	Rabbit
Clonality:	Polyclonal
Conjugate:	This PRUNE antibody is un-conjugated
Application:	Western Blotting (WB), Flow Cytometry (FACS), Immunohistochemistry (Paraffin-embedded Sections) (IHC (p))

## Product Details

Immunogen:	This PRUNE antibody is generated from rabbits immunized with a KLH conjugated synthetic peptide between 360-389 amino acids from the C-terminal region of human PRUNE.
Clone:	RB24464
Isotype:	Ig Fraction
Purification:	This antibody is purified through a protein A column, followed by peptide affinity purification.

## Target Details

Target:	PRUNE
Alternative Name:	PRUNE ( <a href="#">PRUNE Products</a> )

## Target Details

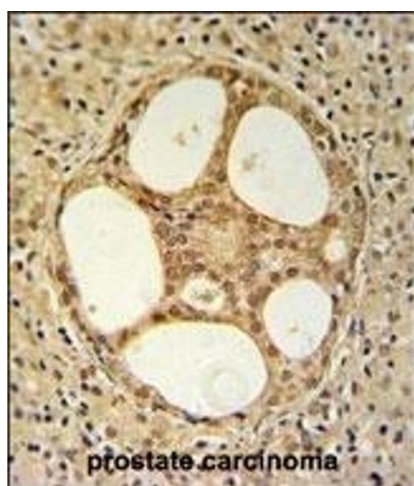
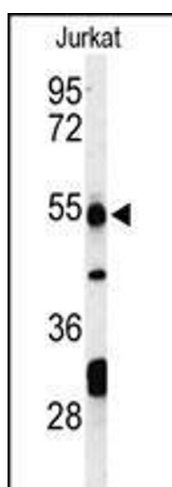
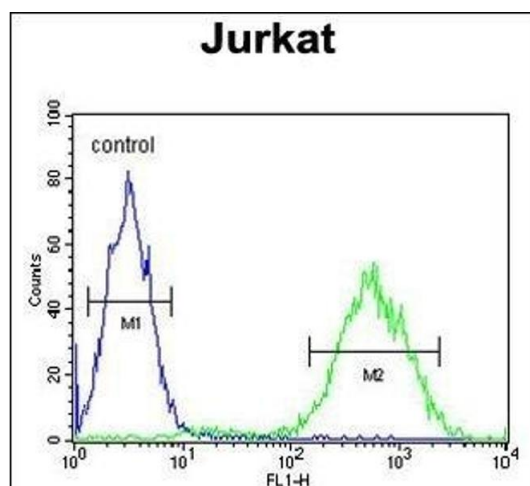
Background:	Phosphodiesterase (PDE) that has higher activity toward cAMP than cGMP, as substrate. It plays a role in cell proliferation, is able to induce cell motility and acts as a negative regulator of NME1.
Molecular Weight:	50200
Gene ID:	58497
NCBI Accession:	<a href="#">NP_067045</a>
UniProt:	<a href="#">Q86TP1</a>

## Application Details

Application Notes:	WB: 1:1000. IHC-P: 1:50~100. FC: 1:10~50
Restrictions:	For Research Use only

## Handling

Format:	Liquid
Buffer:	Purified polyclonal antibody supplied in PBS with 0.09 % (W/V) sodium azide.
Preservative:	Sodium azide
Precaution of Use:	This product contains Sodium azide: a POISONOUS AND HAZARDOUS SUBSTANCE which should be handled by trained staff only.
Storage:	4 °C, -20 °C
Storage Comment:	Maintain refrigerated at 2-8 °C for up to 6 months. For long term storage store at -20 °C in small aliquots to prevent freeze-thaw cycles.
Expiry Date:	6 months



### Flow Cytometry

**Image 1.** PRUNE Antibody (C-term) (ABIN653704 and ABIN2843021) flow cytometric analysis of Jurkat cells (right histogram) compared to a negative control cell (left histogram). FITC-conjugated goat-anti-rabbit secondary antibodies were used for the analysis.

### Western Blotting

**Image 2.** Western blot analysis of PRUNE Antibody (C-term) (ABIN653704 and ABIN2843021) in Jurkat cell line lysates (35  $\mu$ g/lane). PRUNE (arrow) was detected using the purified Pab.

### Immunohistochemistry (Paraffin-embedded Sections)

**Image 3.** PRUNE Antibody (C-term) (ABIN653704 and ABIN2843021) IHC analysis in formalin fixed and paraffin embedded prostate carcinoma followed by peroxidase conjugation of the secondary antibody and DAB staining. This data demonstrates the use of the PRUNE Antibody (C-term) for immunohistochemistry. Clinical relevance has not been evaluated.