

Datasheet for ABIN653712
anti-G Antigen 7 antibody (C-Term)

3 Images

[Go to Product page](#)

Overview

Quantity:	400 µL
Target:	G Antigen 7 (GAGE7)
Binding Specificity:	AA 87-116, C-Term
Reactivity:	Human
Host:	Rabbit
Clonality:	Polyclonal
Conjugate:	This G Antigen 7 antibody is un-conjugated
Application:	Western Blotting (WB), Flow Cytometry (FACS), Immunohistochemistry (Paraffin-embedded Sections) (IHC (p))

Product Details

Immunogen:	This GAGE7 antibody is generated from rabbits immunized with a KLH conjugated synthetic peptide between 87-116 amino acids from the C-terminal region of human GAGE7.
Clone:	RB24494
Isotype:	Ig Fraction
Purification:	This antibody is purified through a protein A column, followed by peptide affinity purification.

Target Details

Target:	G Antigen 7 (GAGE7)
Alternative Name:	GAGE7 (GAGE7 Products)

Target Details

Molecular Weight:	12978
Gene ID:	645073
NCBI Accession:	NP_001091875 , NP_001091879 , NP_001468 , NP_066946
UniProt:	O76087

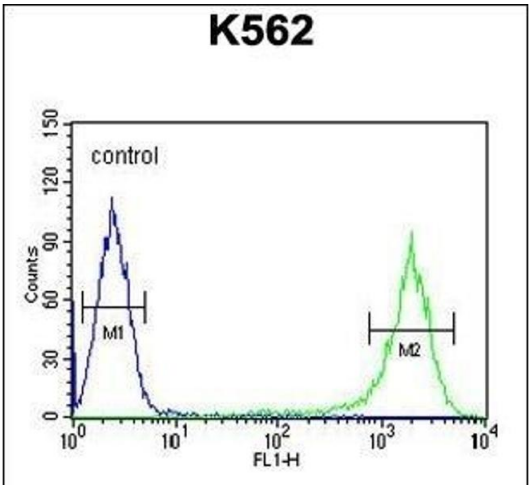
Application Details

Application Notes:	WB: 1:1000. IHC-P: 1:50~100. FC: 1:10~50
Restrictions:	For Research Use only

Handling

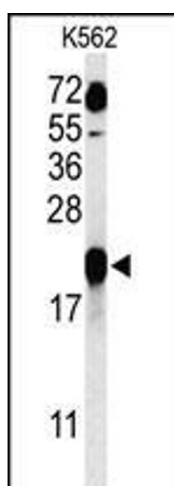
Format:	Liquid
Buffer:	Purified polyclonal antibody supplied in PBS with 0.09 % (W/V) sodium azide.
Preservative:	Sodium azide
Precaution of Use:	This product contains Sodium azide: a POISONOUS AND HAZARDOUS SUBSTANCE which should be handled by trained staff only.
Storage:	4 °C, -20 °C
Storage Comment:	Maintain refrigerated at 2-8 °C for up to 6 months. For long term storage store at -20 °C in small aliquots to prevent freeze-thaw cycles.
Expiry Date:	6 months

Images



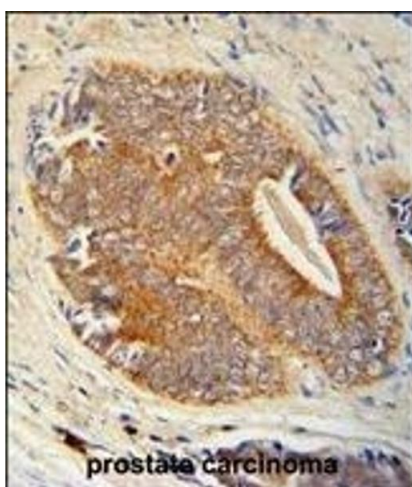
Flow Cytometry

Image 1. GAGE7 Antibody (C-term) (ABIN653712 and ABIN2843026) flow cytometric analysis of K562 cells (right histogram) compared to a negative control cell (left histogram). FITC-conjugated goat-anti-rabbit secondary antibodies were used for the analysis.



Western Blotting

Image 2. Western blot analysis of GAGE7 Antibody (C-term) (ABIN653712 and ABIN2843026) in K562 cell line lysates (35 µg/lane). GAGE7 (arrow) was detected using the purified Pab.



Immunohistochemistry (Paraffin-embedded Sections)

Image 3. GAGE7 Antibody (C-term) (ABIN653712 and ABIN2843026) immunohistochemistry analysis in formalin fixed and paraffin embedded human prostate carcinoma followed by peroxidase conjugation of the secondary antibody and DAB staining. This data demonstrates the use of the GAGE7 Antibody (C-term) for immunohistochemistry. Clinical relevance has not been evaluated.