

Datasheet for ABIN653725
anti-NDUFA10 antibody (AA 252-281)[Go to Product page](#)

3 Images

Overview

Quantity:	400 µL
Target:	NDUFA10
Binding Specificity:	AA 252-281
Reactivity:	Human, Mouse
Host:	Rabbit
Clonality:	Polyclonal
Conjugate:	This NDUFA10 antibody is un-conjugated
Application:	Western Blotting (WB), Flow Cytometry (FACS), Immunohistochemistry (Paraffin-embedded Sections) (IHC (p))

Product Details

Immunogen:	This NDUFA10 antibody is generated from rabbits immunized with a KLH conjugated synthetic peptide between 252-281 amino acids from the Central region of human NDUFA10.
Clone:	RB24540
Isotype:	Ig Fraction
Purification:	This antibody is purified through a protein A column, followed by peptide affinity purification.

Target Details

Target:	NDUFA10
Alternative Name:	NDUFA10 (NDUFA10 Products)

Target Details

Background: The protein encoded by this gene belongs to the complex I 42kDA subunit family. Mammalian complex I is the first enzyme complex in the electron transport chain of mitochondria. It is composed of 45 different subunits. This protein is a component of the hydrophobic protein fraction and has NADH dehydrogenase activity and oxidoreductase activity. It transfers electrons from NADH to the respiratory chain.

Molecular Weight: 40751

Gene ID: 4705

NCBI Accession: [NP_004535](#)

UniProt: [O95299](#)

Application Details

Application Notes: WB: 1:1000. IHC-P: 1:50~100. FC: 1:10~50

Restrictions: For Research Use only

Handling

Format: Liquid

Buffer: Purified polyclonal antibody supplied in PBS with 0.09 % (W/V) sodium azide.

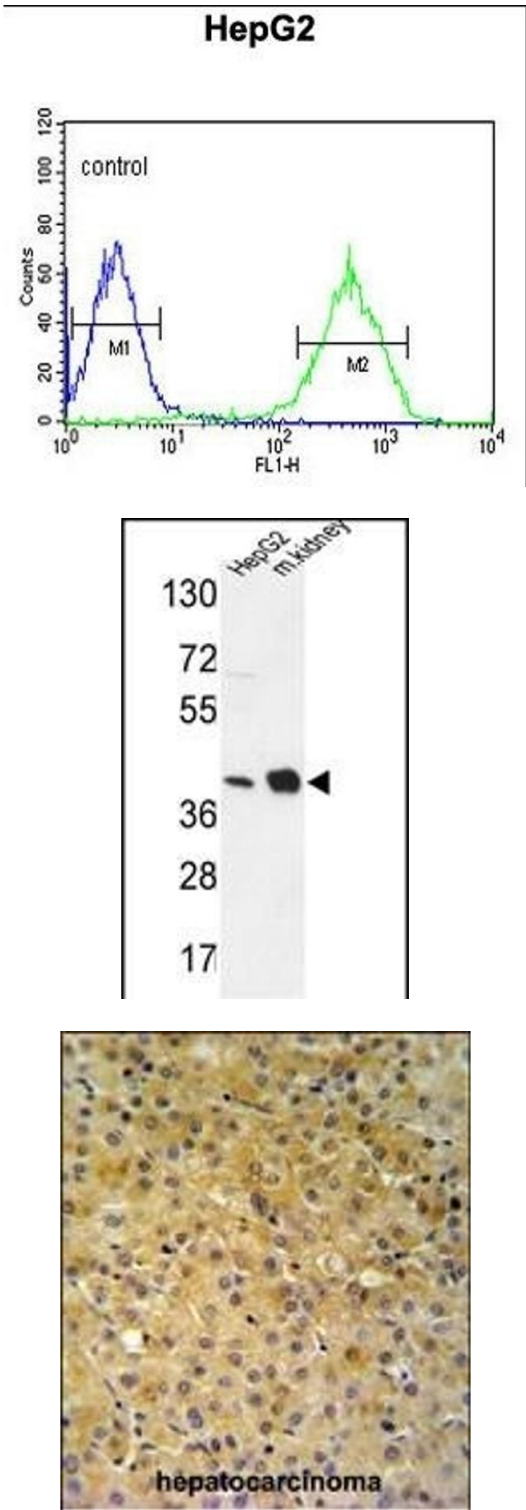
Preservative: Sodium azide

Precaution of Use: This product contains Sodium azide: a POISONOUS AND HAZARDOUS SUBSTANCE which should be handled by trained staff only.

Storage: 4 °C,-20 °C

Storage Comment: Maintain refrigerated at 2-8 °C for up to 6 months. For long term storage store at -20 °C in small aliquots to prevent freeze-thaw cycles.

Expiry Date: 6 months



Flow Cytometry

Image 1. NDUFA10 Antibody (Center) (ABIN653725 and ABIN2843032) flow cytometric analysis of HepG2 cells (right histogram) compared to a negative control cell (left histogram). FITC-conjugated goat-anti-rabbit secondary antibodies were used for the analysis.

Western Blotting

Image 2. NDUFA10 Antibody (Center) (ABIN653725 and ABIN2843032) western blot analysis in HepG2 cell line and mouse kidney tissue lysates (35 µg/lane). This demonstrates the NDUFA10 antibody detected the NDUFA10 protein (arrow).

Immunohistochemistry (Paraffin-embedded Sections)

Image 3. NDUFA10 Antibody (Center) (ABIN653725 and ABIN2843032) IHC analysis in formalin fixed and paraffin embedded hepatocarcinoma followed by peroxidase conjugation of the secondary antibody and DAB staining. This data demonstrates the use of the NDUFA10 Antibody (Center) for immunohistochemistry. Clinical relevance has not been evaluated.