



[Go to Product page](#)

Datasheet for ABIN653730
anti-PLEKHH2 antibody (C-Term)

3 Images

Overview

Quantity:	400 µL
Target:	PLEKHH2
Binding Specificity:	AA 1049-1079, C-Term
Reactivity:	Human
Host:	Rabbit
Clonality:	Polyclonal
Conjugate:	This PLEKHH2 antibody is un-conjugated
Application:	Western Blotting (WB), Flow Cytometry (FACS), Immunohistochemistry (Paraffin-embedded Sections) (IHC (p))

Product Details

Immunogen:	This PKHH2 antibody is generated from rabbits immunized with a KLH conjugated synthetic peptide between 1049-1079 amino acids from the C-terminal region of human PKHH2.
Clone:	RB24556
Isotype:	Ig Fraction
Purification:	This antibody is purified through a protein A column, followed by peptide affinity purification.

Target Details

Target:	PLEKHH2
Alternative Name:	PKHH2 (PLEKHH2 Products)

Target Details

Gene ID: 130271

NCBI Accession: [NP_742066](#)

UniProt: [Q8IVE3](#)

Application Details

Application Notes: WB: 1:1000. IHC-P: 1:50~100. FC: 1:10~50

Restrictions: For Research Use only

Handling

Format: Liquid

Buffer: Purified polyclonal antibody supplied in PBS with 0.09 % (W/V) sodium azide.

Preservative: Sodium azide

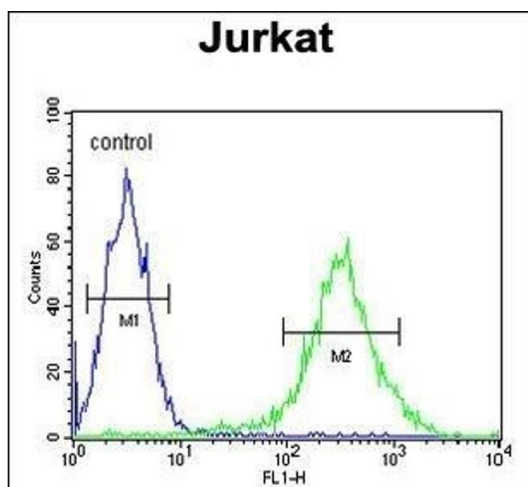
Precaution of Use: This product contains Sodium azide: a POISONOUS AND HAZARDOUS SUBSTANCE which should be handled by trained staff only.

Storage: 4 °C,-20 °C

Storage Comment: Maintain refrigerated at 2-8 °C for up to 6 months. For long term storage store at -20 °C in small aliquots to prevent freeze-thaw cycles.

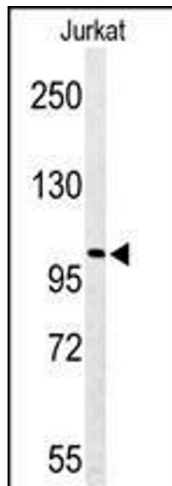
Expiry Date: 6 months

Images



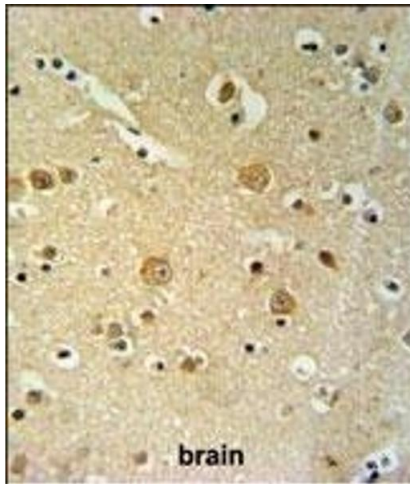
Flow Cytometry

Image 1. PKHH2 Antibody (C-term) (ABIN653730 and ABIN2843037) flow cytometric analysis of Jurkat cells (right histogram) compared to a negative control cell (left histogram). FITC-conjugated goat-anti-rabbit secondary antibodies were used for the analysis.



Western Blotting

Image 2. Western blot analysis of PKHH2 Antibody (C-term) (ABIN653730 and ABIN2843037) in Jurkat cell line lysates (35 µg/lane). PKHH2 (arrow) was detected using the purified Pab.



Immunohistochemistry (Paraffin-embedded Sections)

Image 3. PKHH2 Antibody (C-term) (ABIN653730 and ABIN2843037) IHC analysis in formalin fixed and paraffin embedded brain tissue followed by peroxidase conjugation of the secondary antibody and DAB staining. This data demonstrates the use of the KHH2 Antibody (C-term) for immunohistochemistry. Clinical relevance has not been evaluated.