



[Go to Product page](#)

Datasheet for ABIN653744
anti-GPR180 antibody (AA 119-147)

2 Images

Overview

Quantity:	400 µL
Target:	GPR180
Binding Specificity:	AA 119-147
Reactivity:	Human
Host:	Rabbit
Clonality:	Polyclonal
Conjugate:	This GPR180 antibody is un-conjugated
Application:	Western Blotting (WB), Immunohistochemistry (Paraffin-embedded Sections) (IHC (p))

Product Details

Immunogen:	This GPR180 antibody is generated from rabbits immunized with a KLH conjugated synthetic peptide between 119-147 amino acids from the Central region of human GPR180.
Clone:	RB24629
Isotype:	Ig Fraction
Purification:	This antibody is purified through a protein A column, followed by peptide affinity purification.

Target Details

Target:	GPR180
Alternative Name:	GPR180 (GPR180 Products)
Background:	This gene encodes a protein that is a member of the G protein-coupled receptor superfamily.

Target Details

This protein is produced predominantly in vascular smooth muscle cells and may play an important role in the regulation of vascular remodeling.

Gene ID: 160897

NCBI Accession: [NP_851320](#)

UniProt: [Q86V85](#)

Application Details

Application Notes: WB: 1:1000. IHC-P: 1:50~100

Restrictions: For Research Use only

Handling

Format: Liquid

Buffer: Purified polyclonal antibody supplied in PBS with 0.09 % (W/V) sodium azide.

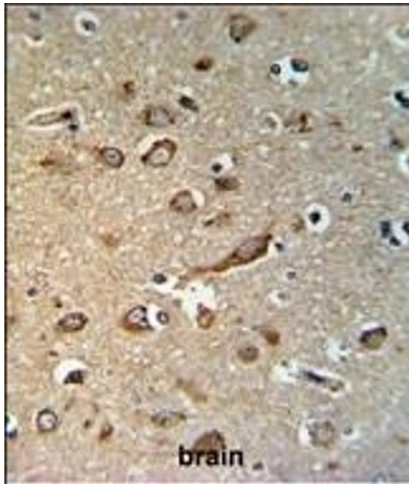
Preservative: Sodium azide

Precaution of Use: This product contains Sodium azide: a POISONOUS AND HAZARDOUS SUBSTANCE which should be handled by trained staff only.

Storage: 4 °C, -20 °C

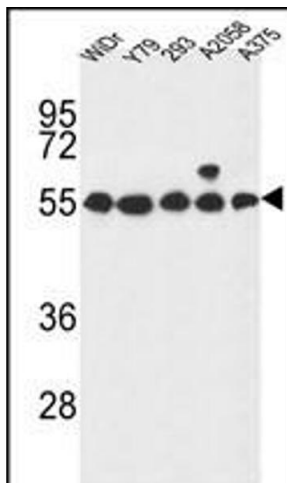
Storage Comment: Maintain refrigerated at 2-8 °C for up to 6 months. For long term storage store at -20 °C in small aliquots to prevent freeze-thaw cycles.

Expiry Date: 6 months



Immunohistochemistry (Paraffin-embedded Sections)

Image 1. GP Antibody (Center) (ABIN653744 and ABIN2843046) IHC analysis in formalin fixed and paraffin embedded brain tissue followed by peroxidase conjugation of the secondary antibody and DAB staining. This data demonstrates the use of the GP Antibody (Center) for immunohistochemistry. Clinical relevance has not been evaluated.



Western Blotting

Image 2. GP Antibody (Center) (ABIN653744 and ABIN2843046) western blot analysis in WiDr, Y79, 293,, cell line lysates (35 µg/lane). This demonstrates the GP antibody detected the GP protein (arrow).