

Datasheet for ABIN653751  
**anti-LMBR1L antibody (C-Term)**[Go to Product page](#)

## 3 Images

## Overview

Quantity:	400 µL
Target:	LMBR1L
Binding Specificity:	AA 462-489, C-Term
Reactivity:	Human
Host:	Rabbit
Clonality:	Polyclonal
Conjugate:	This LMBR1L antibody is un-conjugated
Application:	Western Blotting (WB), Flow Cytometry (FACS), Immunohistochemistry (Paraffin-embedded Sections) (IHC (p))

## Product Details

Immunogen:	This LMBR1L antibody is generated from rabbits immunized with a KLH conjugated synthetic peptide between 462-489 amino acids from the C-terminal region of human LMBR1L.
Clone:	RB24685
Isotype:	Ig Fraction
Purification:	This antibody is purified through a protein A column, followed by peptide affinity purification.

## Target Details

Target:	LMBR1L
Alternative Name:	LMBR1L ( <a href="#">LMBR1L Products</a> )

## Target Details

Molecular Weight:	55209
Gene ID:	55716
NCBI Accession:	<a href="#">NP_060583</a>
UniProt:	<a href="#">Q6UX01</a>

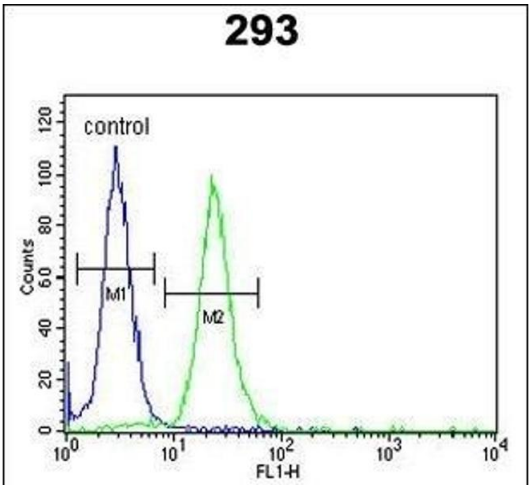
## Application Details

Application Notes:	WB: 1:1000. IHC-P: 1:50~100. FC: 1:10~50
Restrictions:	For Research Use only

## Handling

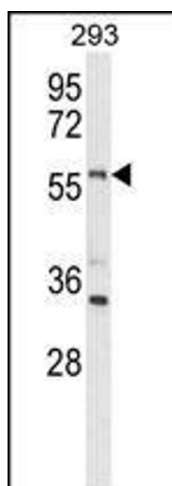
Format:	Liquid
Buffer:	Purified polyclonal antibody supplied in PBS with 0.09 % (W/V) sodium azide.
Preservative:	Sodium azide
Precaution of Use:	This product contains Sodium azide: a POISONOUS AND HAZARDOUS SUBSTANCE which should be handled by trained staff only.
Storage:	4 °C,-20 °C
Storage Comment:	Maintain refrigerated at 2-8 °C for up to 6 months. For long term storage store at -20 °C in small aliquots to prevent freeze-thaw cycles.
Expiry Date:	6 months

## Images



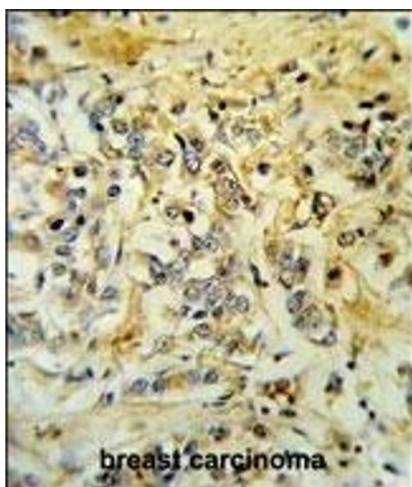
### Flow Cytometry

**Image 1.** LMBR1L Antibody (C-term) (ABIN653751 and ABIN2843051) flow cytometric analysis of 293 cells (right histogram) compared to a negative control cell (left histogram). FITC-conjugated goat-anti-rabbit secondary antibodies were used for the analysis.



### Western Blotting

**Image 2.** Western blot analysis of LMBR1L Antibody (C-term) (ABIN653751 and ABIN2843051) in 293 cell line lysates (35 µg/lane). LMBR1L (arrow) was detected using the purified Pab.



### Immunohistochemistry (Paraffin-embedded Sections)

**Image 3.** LMBR1L Antibody (C-term) (ABIN653751 and ABIN2843051) IHC analysis in formalin fixed and paraffin embedded breast carcinoma followed by peroxidase conjugation of the secondary antibody and DAB staining. This data demonstrates the use of the LMBR1L Antibody (C-term) for immunohistochemistry. Clinical relevance has not been evaluated.