

Datasheet for ABIN653753
anti-PATL1 antibody (C-Term)



[Go to Product page](#)

3 Images

Overview

Quantity:	400 µL
Target:	PATL1
Binding Specificity:	AA 489-518, C-Term
Reactivity:	Human
Host:	Rabbit
Clonality:	Polyclonal
Conjugate:	This PATL1 antibody is un-conjugated
Application:	Western Blotting (WB), Flow Cytometry (FACS), Immunohistochemistry (Paraffin-embedded Sections) (IHC (p))

Product Details

Immunogen:	This PATL1 antibody is generated from rabbits immunized with a KLH conjugated synthetic peptide between 489-518 amino acids from the C-terminal region of human PATL1.
Clone:	RB24821
Isotype:	Ig Fraction
Predicted Reactivity:	M, Rat
Purification:	This antibody is purified through a protein A column, followed by peptide affinity purification.

Target Details

Target:	PATL1
---------	-------

Target Details

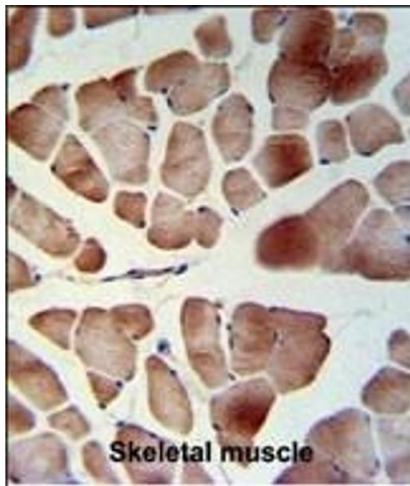
Alternative Name:	PATL1 (PATL1 Products)
Molecular Weight:	86850
Gene ID:	219988
NCBI Accession:	NP_689929
UniProt:	Q86TB9
Pathways:	Ribonucleoprotein Complex Subunit Organization

Application Details

Application Notes:	WB: 1:1000. IHC-P: 1:50~100. FC: 1:10~50
Restrictions:	For Research Use only

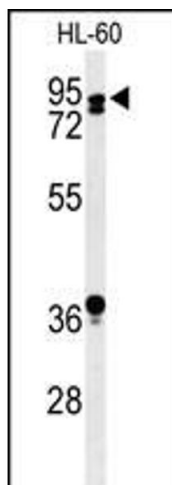
Handling

Format:	Liquid
Buffer:	Purified polyclonal antibody supplied in PBS with 0.09 % (W/V) sodium azide.
Preservative:	Sodium azide
Precaution of Use:	This product contains Sodium azide: a POISONOUS AND HAZARDOUS SUBSTANCE which should be handled by trained staff only.
Storage:	4 °C,-20 °C
Storage Comment:	Maintain refrigerated at 2-8 °C for up to 6 months. For long term storage store at -20 °C in small aliquots to prevent freeze-thaw cycles.
Expiry Date:	6 months



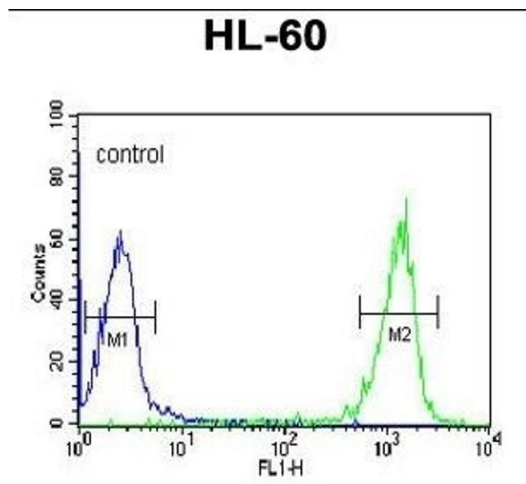
Immunohistochemistry (Paraffin-embedded Sections)

Image 1. TL1 Antibody (C-term) (ABIN653753 and ABIN2843053) IHC analysis in formalin fixed and raffin embedded skeletal muscle followed by peroxidase conjugation of the secondary antibody and DAB staining. This data demonstrates the use of the TL1 Antibody (C-term) for immunohistochemistry. Clinical relevance has not been evaluated.



Western Blotting

Image 2. Western blot analysis of TL1 Antibody (C-term) (ABIN653753 and ABIN2843053) in HL-60 cell line lysates (35 µg/lane). TL1 (arrow) was detected using the purified b.



Flow Cytometry

Image 3. TL1 Antibody (C-term) (ABIN653753 and ABIN2843053) flow cytometric analysis of HL-60 cells (right histogram) comred to a negative control cell (left histogram).FITC-conjugated goat-anti-rabbit secondary antibodies were used for the analysis.