



[Go to Product page](#)

Datasheet for ABIN653755
anti-KLC2 antibody (C-Term)

3 Images

Overview

Quantity:	400 µL
Target:	KLC2
Binding Specificity:	AA 403-432, C-Term
Reactivity:	Human, Mouse
Host:	Rabbit
Clonality:	Polyclonal
Conjugate:	This KLC2 antibody is un-conjugated
Application:	Western Blotting (WB), Flow Cytometry (FACS), Immunohistochemistry (Paraffin-embedded Sections) (IHC (p))

Product Details

Immunogen:	This KLC2 antibody is generated from rabbits immunized with a KLH conjugated synthetic peptide between 403-432 amino acids from the C-terminal region of human KLC2.
Clone:	RB24889
Isotype:	Ig Fraction
Purification:	This antibody is purified through a protein A column, followed by peptide affinity purification.

Target Details

Target:	KLC2
Alternative Name:	KLC2 (KLC2 Products)

Target Details

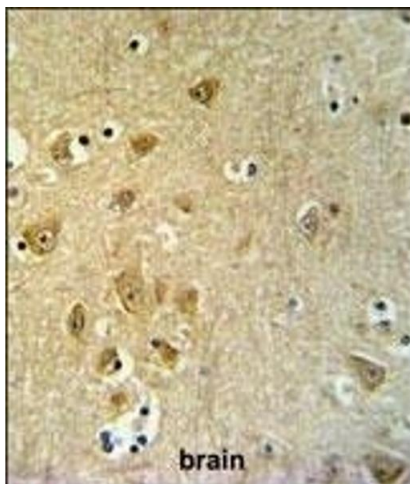
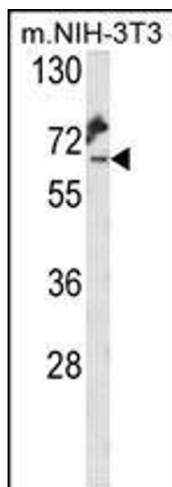
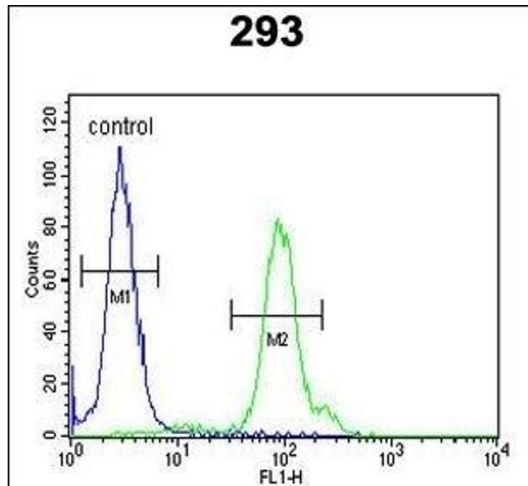
Background:	Kinesin is a molecular motor that generates ATP-dependent movement of vesicles and organelles along microtubules. Kinesin consists of 2 light chains, such as KLC2, and 2 heavy chains (see KIF5B, MIM 602809) in a 1:1 stoichiometric ratio.
Molecular Weight:	68935
Gene ID:	64837
NCBI Accession:	NP_001128246 , NP_001128247 , NP_001128248 , NP_073733
UniProt:	Q9H0B6

Application Details

Application Notes:	WB: 1:1000. IHC-P: 1:50~100. FC: 1:10~50
Restrictions:	For Research Use only

Handling

Format:	Liquid
Buffer:	Purified polyclonal antibody supplied in PBS with 0.09 % (W/V) sodium azide.
Preservative:	Sodium azide
Precaution of Use:	This product contains Sodium azide: a POISONOUS AND HAZARDOUS SUBSTANCE which should be handled by trained staff only.
Storage:	4 °C, -20 °C
Storage Comment:	Maintain refrigerated at 2-8 °C for up to 6 months. For long term storage store at -20 °C in small aliquots to prevent freeze-thaw cycles.
Expiry Date:	6 months



Flow Cytometry

Image 1. KLC2 Antibody (C-Term) (ABIN653755 and ABIN2843055) flow cytometric analysis of 293 cells (right histogram) compared to a negative control cell (left histogram). FITC-conjugated goat-anti-rabbit secondary antibodies were used for the analysis.

Western Blotting

Image 2. Western blot analysis of KLC2 Antibody (C-Term) (ABIN653755 and ABIN2843055) in mouse NIH-3T3 cell line lysates (35 µg/lane). KLC2 (arrow) was detected using the purified Pab.

Immunohistochemistry (Paraffin-embedded Sections)

Image 3. KLC2 Antibody (C-Term) (ABIN653755 and ABIN2843055) IHC analysis in formalin fixed and paraffin embedded brain tissue followed by peroxidase conjugation of the secondary antibody and DAB staining. This data demonstrates the use of the KLC2 Antibody (C-Term) for immunohistochemistry. Clinical relevance has not been evaluated.