

Datasheet for ABIN653781  
**anti-NARFL antibody (AA 240-269)**[Go to Product page](#)

## 2 Images

## Overview

|                      |  |
|----------------------|--|
| Quantity:            | 400 µL                                       |
| Target:              | NARFL  |
| Binding Specificity: | AA 240-269                                   |
| Reactivity:          | Human  |
| Host:                | Rabbit                                       |
| Clonality:           | Polyclonal                                   |
| Conjugate:           | This NARFL antibody is un-conjugated         |
| Application:         | Western Blotting (WB), Flow Cytometry (FACS) |

## Product Details

|               |   |
|---------------|---|
| Immunogen:    | This NARFL antibody is generated from rabbits immunized with a KLH conjugated synthetic peptide between 240-269 amino acids from the Central region of human NARFL. |
| Clone:        | RB22210   |
| Isotype:      | Ig Fraction   |
| Purification: | This antibody is purified through a protein A column, followed by peptide affinity purification.  |

## Target Details

|                   |  |
|-------------------|--|
| Target:           | NARFL                                    |
| Alternative Name: | NARFL ( <a href="#">NARFL Products</a> ) |
| Molecular Weight: | 53020                                    |

## Target Details

|                 |                           |
|-----------------|---------------------------|
| Gene ID:        | 64428                     |
| NCBI Accession: | <a href="#">NP_071938</a> |
| UniProt:        | <a href="#">Q9H6Q4</a>    |

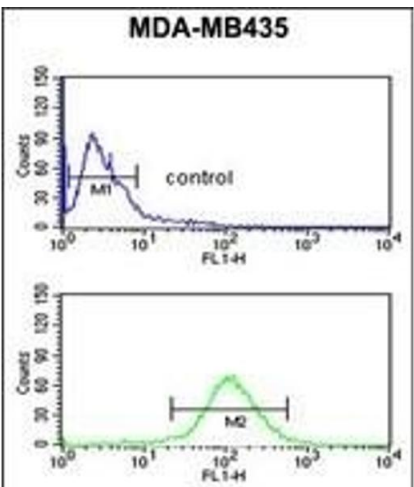
## Application Details

|                    |                         |
|--------------------|-------------------------|
| Application Notes: | WB: 1:1000. FC: 1:10~50 |
| Restrictions:      | For Research Use only   |

## Handling

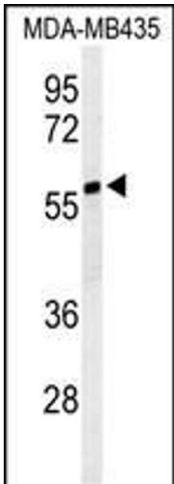
|                    |  |
|--------------------|--|
| Format:            | Liquid   |
| Buffer:            | Purified polyclonal antibody supplied in PBS with 0.09 % (W/V) sodium azide.   |
| Preservative:      | Sodium azide   |
| Precaution of Use: | This product contains Sodium azide: a POISONOUS AND HAZARDOUS SUBSTANCE which should be handled by trained staff only.                     |
| Storage:           | 4 °C,-20 °C  |
| Storage Comment:   | Maintain refrigerated at 2-8 °C for up to 6 months. For long term storage store at -20 °C in small aliquots to prevent freeze-thaw cycles. |
| Expiry Date:       | 6 months   |

## Images



### Flow Cytometry

**Image 1.** NARFL Antibody (Center) (ABIN653781 and ABIN2843068) flow cytometric analysis of MDA-M cells (bottom histogram) compared to a negative control cell (top histogram). FITC-conjugated goat-anti-rabbit secondary antibodies were used for the analysis.



Western Blotting

**Image 2.** Western blot analysis of NARFL Antibody (Center) (ABIN653781 and ABIN2843068) in MDA-M cell line lysates (35 µg/lane). NARFL (arrow) was detected using the purified Pab.