



[Go to Product page](#)

Datasheet for ABIN653792

## anti-PCDH17 antibody (C-Term)

### 2 Images

#### Overview

Quantity:	400 µL
Target:	PCDH17
Binding Specificity:	AA 1107-1136, C-Term
Reactivity:	Human
Host:	Rabbit
Clonality:	Polyclonal
Conjugate:	This PCDH17 antibody is un-conjugated
Application:	Western Blotting (WB), Flow Cytometry (FACS)

#### Product Details

Immunogen:	This PCDH17 antibody is generated from rabbits immunized with a KLH conjugated synthetic peptide between 1107-1136 amino acids from the C-terminal region of human PCDH17.
Clone:	RB24175
Isotype:	Ig Fraction
Purification:	This antibody is purified through a protein A column, followed by peptide affinity purification.

#### Target Details

Target:	PCDH17
Alternative Name:	PCDH17 ( <a href="#">PCDH17 Products</a> )
Background:	This gene belongs to the protocadherin gene family, a subfamily of the cadherin superfamily.

## Target Details

---

The encoded protein contains six extracellular cadherin domains, a transmembrane domain, and a cytoplasmic tail differing from those of the classical cadherins. The encoded protein may play a role in the establishment and function of specific cell-cell connections in the brain.

Molecular Weight: 126229

Gene ID: 27253

NCBI Accession: [NP\\_001035519](#)

UniProt: [O14917](#)

## Application Details

---

Application Notes: WB: 1:1000. FC: 1:10~50

Restrictions: For Research Use only

## Handling

---

Format: Liquid

Buffer: Purified polyclonal antibody supplied in PBS with 0.09 % (W/V) sodium azide.

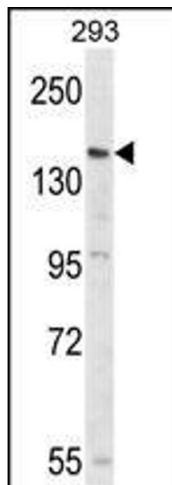
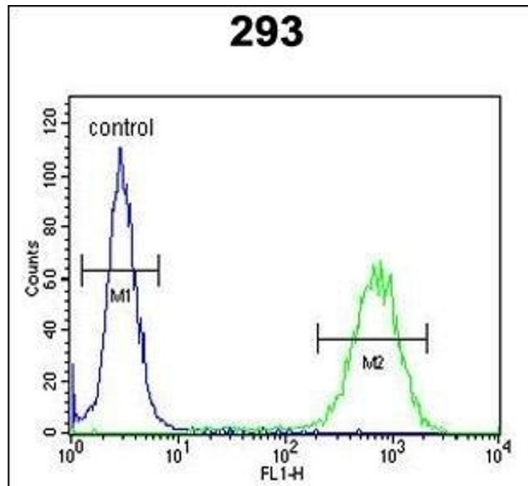
Preservative: Sodium azide

Precaution of Use: This product contains Sodium azide: a POISONOUS AND HAZARDOUS SUBSTANCE which should be handled by trained staff only.

Storage: 4 °C, -20 °C

Storage Comment: Maintain refrigerated at 2-8 °C for up to 6 months. For long term storage store at -20 °C in small aliquots to prevent freeze-thaw cycles.

Expiry Date: 6 months



### Flow Cytometry

**Image 1.** PCDH17 Antibody (C-term) (ABIN653792 and ABIN2843076) flow cytometric analysis of 293 cells (right histogram) compared to a negative control cell (left histogram). FITC-conjugated goat-anti-rabbit secondary antibodies were used for the analysis.

### Western Blotting

**Image 2.** Western blot analysis of PCDH17 Antibody (C-term) (ABIN653792 and ABIN2843076) in 293 cell line lysates (35 µg/lane). PCDH17 (arrow) was detected using the purified Pab.