

Datasheet for ABIN653795
anti-OST alpha antibody (C-Term)



[Go to Product page](#)

2 Images

Overview

Quantity:	400 µL
Target:	OST alpha (OSTALPHA)
Binding Specificity:	AA 298-327, C-Term
Reactivity:	Human
Host:	Rabbit
Clonality:	Polyclonal
Conjugate:	This OST alpha antibody is un-conjugated
Application:	Western Blotting (WB), Flow Cytometry (FACS)

Product Details

Immunogen:	This OST alpha antibody is generated from rabbits immunized with a KLH conjugated synthetic peptide between 298-327 amino acids from the C-terminal region of human OST alpha.
Clone:	RB24183
Isotype:	Ig Fraction
Purification:	This antibody is purified through a protein A column, followed by peptide affinity purification.

Target Details

Target:	OST alpha (OSTALPHA)
Alternative Name:	OST alpha (OSTALPHA Products)
Molecular Weight:	37735

Target Details

Gene ID: 200931

NCBI Accession: [NP_689885](#)

UniProt: [Q86UW1](#)

Application Details

Application Notes: WB: 1:1000. FC: 1:10~50

Restrictions: For Research Use only

Handling

Format: Liquid

Buffer: Purified polyclonal antibody supplied in PBS with 0.09 % (W/V) sodium azide.

Preservative: Sodium azide

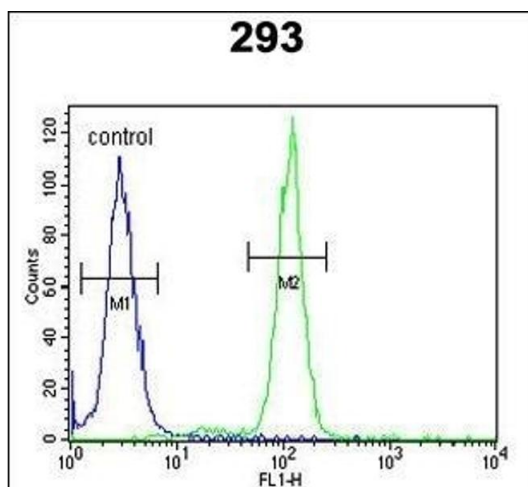
Precaution of Use: This product contains Sodium azide: a POISONOUS AND HAZARDOUS SUBSTANCE which should be handled by trained staff only.

Storage: 4 °C, -20 °C

Storage Comment: Maintain refrigerated at 2-8 °C for up to 6 months. For long term storage store at -20 °C in small aliquots to prevent freeze-thaw cycles.

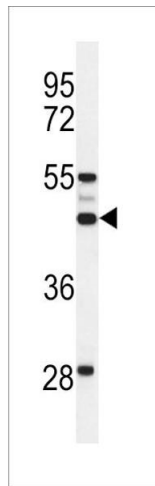
Expiry Date: 6 months

Images



Flow Cytometry

Image 1. OST alpha Antibody (C-term) (ABIN653795 and ABIN2843077) flow cytometric analysis of 293 cells (right histogram) compared to a negative control cell (left histogram). FITC-conjugated goat-anti-rabbit secondary antibodies were used for the analysis.



Western Blotting

Image 2. Western blot analysis of OSTalpha Antibody (C-term) (ABIN653795 and ABIN2843077) in 293 cell line lysates (35 µg/lane). OST alpha (arrow) was detected using the purified Pab.