

Datasheet for ABIN653796
anti-GLG1 antibody (C-Term)

6 Images

[Go to Product page](#)

Overview

Quantity:	400 µL
Target:	GLG1
Binding Specificity:	AA 1152-1179, C-Term
Reactivity:	Human, Mouse
Host:	Rabbit
Clonality:	Polyclonal
Conjugate:	This GLG1 antibody is un-conjugated
Application:	Western Blotting (WB), Immunohistochemistry (Paraffin-embedded Sections) (IHC (p))

Product Details

Immunogen:	This GLG1 antibody is generated from rabbits immunized with a KLH conjugated synthetic peptide between 1152-1179 amino acids from the C-terminal region of human GLG1.
Clone:	RB24297
Isotype:	Ig Fraction
Predicted Reactivity:	C, Ha, Rat
Purification:	This antibody is purified through a protein A column, followed by peptide affinity purification.

Target Details

Target:	GLG1
Alternative Name:	GLG1 (GLG1 Products)

Target Details

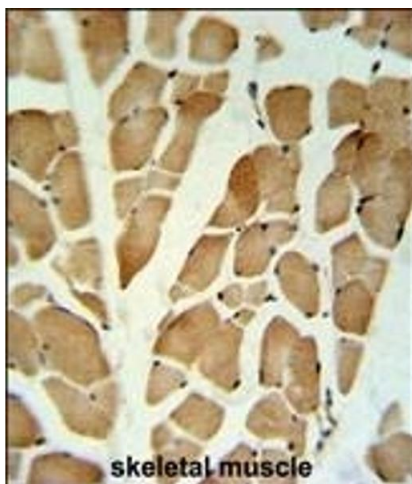
Molecular Weight:	134552
Gene ID:	2734
NCBI Accession:	NP_001139138 , NP_001139139 , NP_036333
UniProt:	Q92896

Application Details

Application Notes:	WB: 1:2000. WB: 1:1000. WB: 1:1000. WB: 1:2000. WB: 1:2000. IHC-P: 1:50~100
Restrictions:	For Research Use only

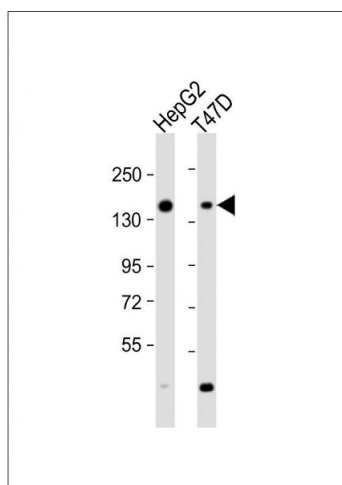
Handling

Format:	Liquid
Buffer:	Purified polyclonal antibody supplied in PBS with 0.09 % (W/V) sodium azide.
Preservative:	Sodium azide
Precaution of Use:	This product contains Sodium azide: a POISONOUS AND HAZARDOUS SUBSTANCE which should be handled by trained staff only.
Handling Advice:	Avoid freeze-thaw cycles.
Storage:	4 °C,-20 °C
Storage Comment:	Maintain refrigerated at 2-8 °C for up to 6 months. For long term storage store at -20 °C in small aliquots.
Expiry Date:	6 months



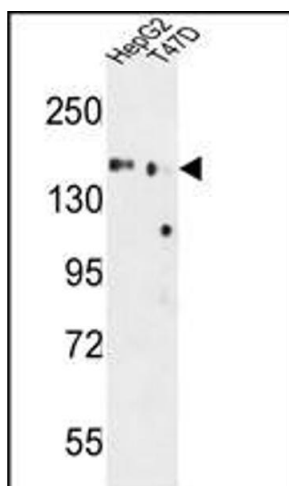
Immunohistochemistry (Paraffin-embedded Sections)

Image 1. GLG1 Antibody (C-term) (ABIN653796 and ABIN2843078) IHC analysis in formalin fixed and paraffin embedded skeletal muscle followed by peroxidase conjugation of the secondary antibody and DAB staining. This data demonstrates the use of the GLG1 Antibody (C-term) for immunohistochemistry. Clinical relevance has not been evaluated.



Western Blotting

Image 2. All lanes : Anti-GLG1 Antibody (C-term) at 1:2000 dilution Lane 1: HepG2 whole cell lysate Lane 2: T47D whole cell lysate Lysates/proteins at 20 µg per lane. Secondary Goat Anti-Rabbit IgG, (H+L), Peroxidase conjugated at 1/10000 dilution. Predicted band size : 136 kDa Blocking/Dilution buffer: 5 % NFDM/TBST.



Western Blotting

Image 3. GLG1 Antibody (C-term) (ABIN653796 and ABIN2843078) western blot analysis in HepG2,T47D cell line lysates (35 µg/lane).This demonstrates the GLG1 antibody detected the GLG1 protein (arrow).

Please check the [product details page](#) for more images. Overall 6 images are available for ABIN653796.