



[Go to Product page](#)

Datasheet for ABIN653803

## anti-ETS2 antibody (AA 146-173)

3 Images

1 Publication

### Overview

Quantity:	400 µL
Target:	ETS2
Binding Specificity:	AA 146-173
Reactivity:	Human
Host:	Rabbit
Clonality:	Polyclonal
Conjugate:	This ETS2 antibody is un-conjugated
Application:	Western Blotting (WB), Flow Cytometry (FACS), Immunohistochemistry (Paraffin-embedded Sections) (IHC (p))

### Product Details

Immunogen:	This ETS2 antibody is generated from rabbits immunized with a KLH conjugated synthetic peptide between 146-173 amino acids from the Central region of human ETS2.
Clone:	RB24588
Isotype:	IgG
Predicted Reactivity:	B, M
Purification:	This antibody is purified through a protein A column, followed by peptide affinity purification.

### Target Details

Target:	ETS2
---------	------

## Target Details

---

Alternative Name:	ETS2 ( <a href="#">ETS2 Products</a> )
Background:	ETS transcriptions factors, such as ETS2, regulate numerous genes and are involved in stem cell development, cell senescence and death, and tumorigenesis. The conserved ETS domain within these proteins is a winged helix-turn-helix DNA-binding domain that recognizes the core consensus DNA sequence GGAA/T of target genes.
Molecular Weight:	53001
Gene ID:	2114
NCBI Accession:	<a href="#">NP_005230</a>
UniProt:	<a href="#">P15036</a>
Pathways:	<a href="#">EGFR Signaling Pathway</a> , <a href="#">Myometrial Relaxation and Contraction</a>

## Application Details

---

Application Notes:	WB: 1:2000. IHC-P: 1:50~100. FC: 1:10~50
Restrictions:	For Research Use only

## Handling

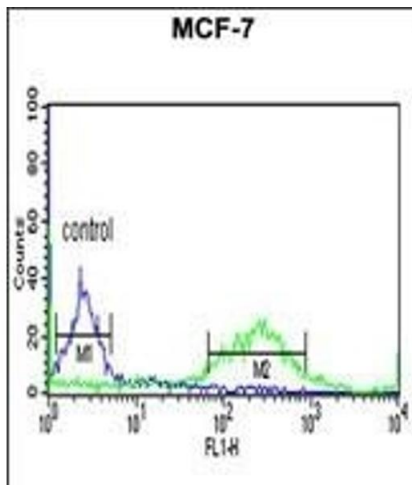
---

Format:	Liquid
Buffer:	Purified polyclonal antibody supplied in PBS with 0.09 % (W/V) sodium azide.
Preservative:	Sodium azide
Precaution of Use:	This product contains Sodium azide: a POISONOUS AND HAZARDOUS SUBSTANCE which should be handled by trained staff only.
Storage:	4 °C, -20 °C
Storage Comment:	Maintain refrigerated at 2-8 °C for up to 6 months. For long term storage store at -20 °C in small aliquots to prevent freeze-thaw cycles.
Expiry Date:	6 months

## Publications

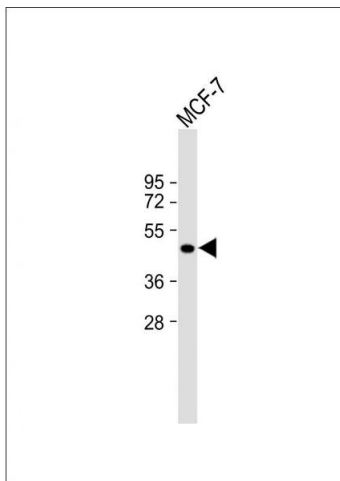
---

Product cited in:	Bernardi, Williams, Inoue, Schultz, Tsai: "A deubiquitinase negatively regulates retro-translocation of nonubiquitinated substrates." in: <b>Molecular biology of the cell</b> , Vol. 24, Issue 22, pp. 3545-56, (2013) ( <a href="#">PubMed</a> ).
-------------------	---



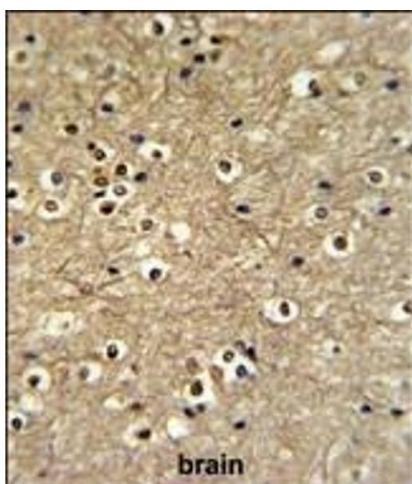
### Flow Cytometry

**Image 1.** ETS2 Antibody (Center) (ABIN653803 and ABIN2843080) flow cytometric analysis of MCF-7 cells (right histogram) compared to a negative control cell (left histogram). FITC-conjugated goat-anti-rabbit secondary antibodies were used for the analysis.



### Western Blotting

**Image 2.** Anti-ETS2 Antibody (Center) at 1:2000 dilution + MCF-7 whole cell lysate Lysates/proteins at 20 µg per lane. Secondary Goat Anti-Rabbit IgG, (H+L), Peroxidase conjugated at 1/10000 dilution. Predicted band size : 53 kDa Blocking/Dilution buffer: 5 % NFDm/TBST.



### Immunohistochemistry (Paraffin-embedded Sections)

**Image 3.** ETS2 Antibody (Center) (ABIN653803 and ABIN2843080) IHC analysis in formalin fixed and paraffin embedded brain tissue followed by peroxidase conjugation of the secondary antibody and DAB staining. This data demonstrates the use of the ETS2 Antibody (Center) for immunohistochemistry. Clinical relevance has not been evaluated.