

Datasheet for ABIN653804
anti-FCRL4 antibody (C-Term)[Go to Product page](#)

3 Images

Overview

Quantity:	400 µL
Target:	FCRL4
Binding Specificity:	AA 480-507, C-Term
Reactivity:	Human
Host:	Rabbit
Clonality:	Polyclonal
Conjugate:	This FCRL4 antibody is un-conjugated
Application:	Western Blotting (WB), Flow Cytometry (FACS)

Product Details

Immunogen:	This FCRL4 antibody is generated from rabbits immunized with a KLH conjugated synthetic peptide between 480-507 amino acids from the C-terminal region of human FCRL4.
Clone:	RB24597
Isotype:	Ig Fraction
Purification:	This antibody is purified through a protein A column, followed by peptide affinity purification.

Target Details

Target:	FCRL4
Alternative Name:	FCRL4 (FCRL4 Products)
Background:	This gene encodes a member of the immunoglobulin receptor superfamily and is one of several

Target Details

Fc receptor-like glycoproteins clustered on the long arm of chromosome 1. The encoded protein has four extracellular C2-type immunoglobulin domains, a transmembrane domain and a cytoplasmic domain that contains three immune-receptor tyrosine-based inhibitory motifs. This protein may play a role in the function of memory B-cells in the epithelia. Aberrations in the chromosomal region encoding this gene are associated with non-Hodgkin lymphoma and multiple myeloma.

Molecular Weight: 57224

Gene ID: 83417

NCBI Accession: [NP_112572](#)

UniProt: [Q96PJ5](#)

Application Details

Application Notes: WB: 1:2000. WB: 1:2000. FC: 1:10~50

Restrictions: For Research Use only

Handling

Format: Liquid

Buffer: Purified polyclonal antibody supplied in PBS with 0.09 % (W/V) sodium azide.

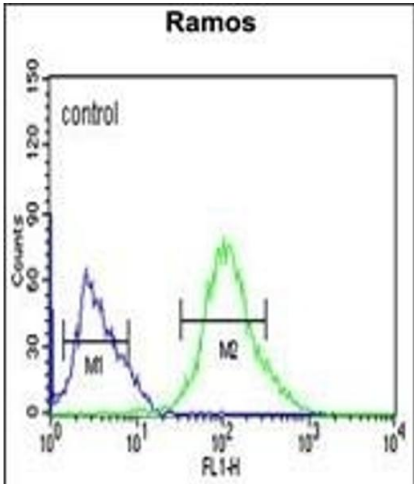
Preservative: Sodium azide

Precaution of Use: This product contains Sodium azide: a POISONOUS AND HAZARDOUS SUBSTANCE which should be handled by trained staff only.

Storage: 4 °C, -20 °C

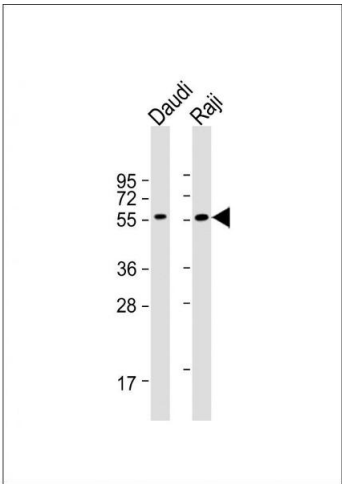
Storage Comment: Maintain refrigerated at 2-8 °C for up to 6 months. For long term storage store at -20 °C in small aliquots to prevent freeze-thaw cycles.

Expiry Date: 6 months



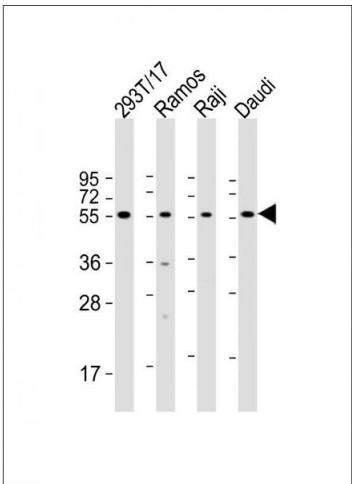
Flow Cytometry

Image 1. FCRL4 Antibody (C-term) (ABIN653804 and ABIN2843081) flow cytometric analysis of Ramos cells (right histogram) compared to a negative control cell (left histogram).FITC-conjugated goat-anti-rabbit secondary antibodies were used for the analysis.



Western Blotting

Image 2. All lanes : Anti-FCRL4 Antibody (C-term) at 1:2000 dilution Lane 1: Daudi whole cell lysate Lane 2: Raji whole cell lysate Lysates/proteins at 20 µg per lane. Secondary Goat Anti-Rabbit IgG, (H+L), Peroxidase conjugated at 1/10000 dilution. Predicted band size : 57 kDa Blocking/Dilution buffer: 5 % NFDM/TBST.



Western Blotting

Image 3. All lanes : Anti-FCRL4 Antibody (C-term) at 1:2000 dilution Lane 1: 293T/17 whole cell lysate Lane 2: Ramos whole cell lysate Lane 3: Raji whole cell lysate Lane 4: Daudi whole cell lysate Lysates/proteins at 20 µg per lane. Secondary Goat Anti-Rabbit IgG, (H+L), Peroxidase conjugated at 1/10000 dilution. Predicted band size : 57 kDa Blocking/Dilution buffer: 5 % NFDM/TBST.