

Datasheet for ABIN653808  
**anti-MRPS25 antibody (C-Term)**

## 3 Images

[Go to Product page](#)

## Overview

|                      |   |
|----------------------|---|
| Quantity:            | 400 µL  |
| Target:              | MRPS25  |
| Binding Specificity: | AA 145-173, C-Term  |
| Reactivity:          | Human   |
| Host:                | Rabbit  |
| Clonality:           | Polyclonal  |
| Conjugate:           | This MRPS25 antibody is un-conjugated   |
| Application:         | Western Blotting (WB), Flow Cytometry (FACS), Immunohistochemistry (Paraffin-embedded Sections) (IHC (p)) |

## Product Details

|               |  |
|---------------|--|
| Immunogen:    | This RT25 antibody is generated from rabbits immunized with a KLH conjugated synthetic peptide between 145-173 amino acids from the C-terminal region of human RT25. |
| Clone:        | RB24754  |
| Isotype:      | Ig Fraction  |
| Purification: | This antibody is purified through a protein A column, followed by peptide affinity purification.   |

## Target Details

|                   |  |
|-------------------|--|
| Target:           | MRPS25                                   |
| Alternative Name: | RT25 ( <a href="#">MRPS25 Products</a> ) |

## Target Details

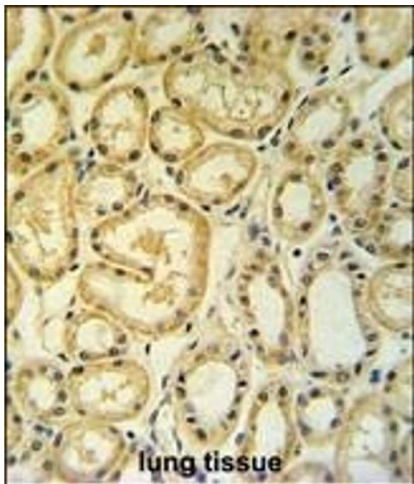
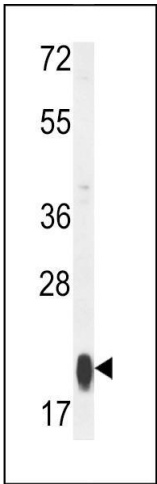
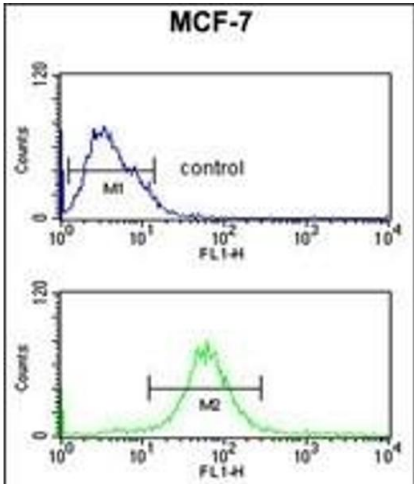
|                   |   |
|-------------------|---|
| Background:       | Mammalian mitochondrial ribosomal proteins are encoded by nuclear genes and help in protein synthesis within the mitochondrion. Mitochondrial ribosomes (mitoribosomes) consist of a small 28S subunit and a large 39S subunit. They have an estimated 75 % protein to rRNA composition compared to prokaryotic ribosomes, where this ratio is reversed. Another difference between mammalian mitoribosomes and prokaryotic ribosomes is that the latter contain a 5S rRNA. Among different species, the proteins comprising the mitoribosome differ greatly in sequence, and sometimes in biochemical properties, which prevents easy recognition by sequence homology. This gene encodes a 28S subunit protein. A pseudogene corresponding to this gene is found on chromosome 4. |
| Molecular Weight: | 20116   |
| Gene ID:          | 64432   |
| NCBI Accession:   | <a href="#">NP_071942</a>   |
| UniProt:          | <a href="#">P82663</a>  |
| Pathways:         | <a href="#">SARS-CoV-2 Protein Interactome</a>  |

## Application Details

|                    |  |
|--------------------|--|
| Application Notes: | WB: 1:1000. IHC-P: 1:50~100. FC: 1:10~50 |
| Restrictions:      | For Research Use only                    |

## Handling

|                    |  |
|--------------------|--|
| Format:            | Liquid   |
| Buffer:            | Purified polyclonal antibody supplied in PBS with 0.09 % (W/V) sodium azide.   |
| Preservative:      | Sodium azide   |
| Precaution of Use: | This product contains Sodium azide: a POISONOUS AND HAZARDOUS SUBSTANCE which should be handled by trained staff only.                     |
| Storage:           | 4 °C,-20 °C  |
| Storage Comment:   | Maintain refrigerated at 2-8 °C for up to 6 months. For long term storage store at -20 °C in small aliquots to prevent freeze-thaw cycles. |
| Expiry Date:       | 6 months   |



### Flow Cytometry

**Image 1.** RT25 Antibody (C-term) (ABIN653808 and ABIN2843083) flow cytometric analysis of MCF-7 cells (bottom histogram) compared to a negative control cell (top histogram). FITC-conjugated goat-anti-rabbit secondary antibodies were used for the analysis.

### Western Blotting

**Image 2.** Western blot analysis of RT25 Antibody (C-term) (ABIN653808 and ABIN2843083) in MCF-7 cell line lysates (35 µg/lane). RT25 (arrow) was detected using the purified Pab.

### Immunohistochemistry (Paraffin-embedded Sections)

**Image 3.** RT25 Antibody (C-term) (ABIN653808 and ABIN2843083) IHC analysis in formalin fixed and paraffin embedded human lung tissue followed by peroxidase conjugation of the secondary antibody and DAB staining. This data demonstrates the use of the RT25 Antibody (C-term) for immunohistochemistry. Clinical relevance has not been evaluated.