



[Go to Product page](#)

Datasheet for ABIN653825
anti-LCAT antibody (AA 285-313)

4 Images

Overview

Quantity:	400 µL
Target:	LCAT
Binding Specificity:	AA 285-313
Reactivity:	Human
Host:	Rabbit
Clonality:	Polyclonal
Conjugate:	This LCAT antibody is un-conjugated
Application:	Western Blotting (WB), Immunofluorescence (IF), Flow Cytometry (FACS), Immunohistochemistry (Paraffin-embedded Sections) (IHC (p))

Product Details

Immunogen:	This LCAT antibody is generated from rabbits immunized with a KLH conjugated synthetic peptide between 285-313 amino acids from the Central region of human LCAT.
Clone:	RB23365
Isotype:	Ig Fraction
Purification:	This antibody is purified through a protein A column, followed by peptide affinity purification.

Target Details

Target:	LCAT
Alternative Name:	LCAT (LCAT Products)

Target Details

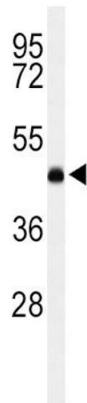
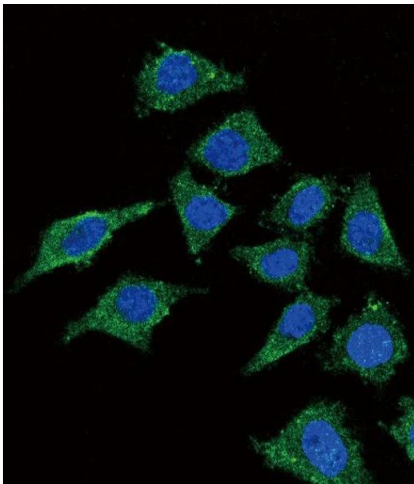
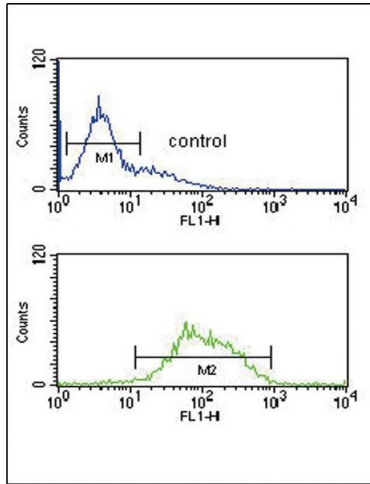
Background:	LCAT encodes the extracellular cholesterol esterifying enzyme, lecithin-cholesterol acyltransferase. The esterification of cholesterol is required for cholesterol transport.
Molecular Weight:	49578
Gene ID:	3931
NCBI Accession:	NP_000220
UniProt:	P04180
Pathways:	Lipid Metabolism

Application Details

Application Notes:	IF: 1:10~50. WB: 1:1000. IHC-P: 1:10~50. FC: 1:10~50
Restrictions:	For Research Use only

Handling

Format:	Liquid
Buffer:	Purified polyclonal antibody supplied in PBS with 0.09 % (W/V) sodium azide.
Preservative:	Sodium azide
Precaution of Use:	This product contains Sodium azide: a POISONOUS AND HAZARDOUS SUBSTANCE which should be handled by trained staff only.
Storage:	4 °C,-20 °C
Storage Comment:	Maintain refrigerated at 2-8 °C for up to 6 months. For long term storage store at -20 °C in small aliquots to prevent freeze-thaw cycles.
Expiry Date:	6 months



Flow Cytometry

Image 1. LCAT Antibody (Center) (ABIN653825 and ABIN2843093) flow cytometric analysis of K562 cells (bottom histogram) compared to a negative control cell (top histogram). FITC-conjugated goat-anti-rabbit secondary antibodies were used for the analysis.

Immunofluorescence

Image 2. Confocal immunofluorescent analysis of LCAT Antibody (Center) (ABIN653825 and ABIN2843093) with 293 cell followed by Alexa Fluor[®]488-conjugated goat anti-rabbit IgG (green). DAPI was used to stain the cell nuclear (blue).

Western Blotting

Image 3. Western blot analysis of LCAT Antibody (Center) (ABIN653825 and ABIN2843093) in K562 cell line lysates (35 µg/lane). LCAT (arrow) was detected using the purified Pab.

Please check the [product details page](#) for more images. Overall 4 images are available for ABIN653825.