

Datasheet for ABIN653829  
**anti-PXMP2 antibody (AA 40-68)**[Go to Product page](#)

## 2 Images

## Overview

Quantity:	400 µL
Target:	PXMP2
Binding Specificity:	AA 40-68
Reactivity:	Human
Host:	Rabbit
Clonality:	Polyclonal
Conjugate:	This PXMP2 antibody is un-conjugated
Application:	Western Blotting (WB), Flow Cytometry (FACS)

## Product Details

Immunogen:	This PXMP2 antibody is generated from rabbits immunized with a KLH conjugated synthetic peptide between 40-68 amino acids from the Central region of human PXMP2.
Clone:	RB23583
Isotype:	Ig Fraction
Purification:	This antibody is purified through a protein A column, followed by peptide affinity purification.

## Target Details

Target:	PXMP2
Alternative Name:	PXMP2 ( <a href="#">PXMP2 Products</a> )
Molecular Weight:	22253

## Target Details

Gene ID:	5827
NCBI Accession:	<a href="#">NP_061133</a>
UniProt:	<a href="#">Q9NR77</a>

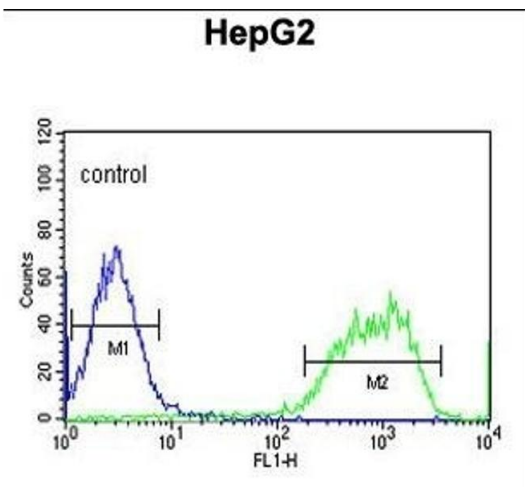
## Application Details

Application Notes:	WB: 1:1000. FC: 1:10~50
Restrictions:	For Research Use only

## Handling

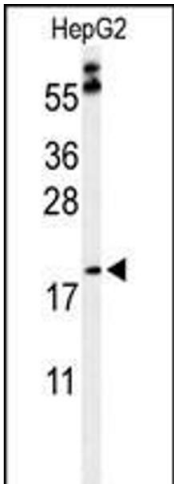
Format:	Liquid
Buffer:	Purified polyclonal antibody supplied in PBS with 0.09 % (W/V) sodium azide.
Preservative:	Sodium azide
Precaution of Use:	This product contains Sodium azide: a POISONOUS AND HAZARDOUS SUBSTANCE which should be handled by trained staff only.
Storage:	4 °C,-20 °C
Storage Comment:	Maintain refrigerated at 2-8 °C for up to 6 months. For long term storage store at -20 °C in small aliquots to prevent freeze-thaw cycles.
Expiry Date:	6 months

## Images



### Flow Cytometry

**Image 1.** PX Antibody (Center) (ABIN653829 and ABIN2843096) flow cytometric analysis of HepG2 cells (right histogram) compared to a negative control cell (left histogram). FITC-conjugated goat-anti-rabbit secondary antibodies were used for the analysis.



Western Blotting

**Image 2.** Western blot analysis of PX Antibody (Center) (ABIN653829 and ABIN2843096) in HepG2 cell line lysates (35 µg/lane). PX (arrow) was detected using the purified Pab.