

Datasheet for ABIN653843
anti-METTL1 antibody (AA 147-175)[Go to Product page](#)

1 Image

Overview

Quantity:	400 µL
Target:	METTL1
Binding Specificity:	AA 147-175
Reactivity:	Human
Host:	Rabbit
Clonality:	Polyclonal
Conjugate:	This METTL1 antibody is un-conjugated
Application:	Western Blotting (WB)

Product Details

Immunogen:	This METTL1 antibody is generated from rabbits immunized with a KLH conjugated synthetic peptide between 147-175 amino acids from the Central region of human METTL1.
Clone:	RB24424
Isotype:	Ig Fraction
Predicted Reactivity:	B, M
Purification:	This antibody is purified through a protein A column, followed by peptide affinity purification.

Target Details

Target:	METTL1
Alternative Name:	METTL1 (METTL1 Products)

Target Details

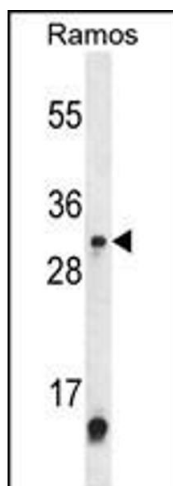
Background:	This gene is similar in sequence to the <i>S. cerevisiae</i> YDL201w gene. The gene product contains a conserved S-adenosylmethionine-binding motif and is inactivated by phosphorylation.
Molecular Weight:	31471
Gene ID:	4234
NCBI Accession:	NP_005362 , NP_075422
UniProt:	Q9UBP6

Application Details

Application Notes:	WB: 1:1000
Restrictions:	For Research Use only

Handling

Format:	Liquid
Buffer:	Purified polyclonal antibody supplied in PBS with 0.09 % (W/V) sodium azide.
Preservative:	Sodium azide
Precaution of Use:	This product contains Sodium azide: a POISONOUS AND HAZARDOUS SUBSTANCE which should be handled by trained staff only.
Storage:	4 °C, -20 °C
Storage Comment:	Maintain refrigerated at 2-8 °C for up to 6 months. For long term storage store at -20 °C in small aliquots to prevent freeze-thaw cycles.
Expiry Date:	6 months



Western Blotting

Image 1. Western blot analysis of METTL1 Antibody (Center) (ABIN653843 and ABIN2843107) in Ramos cell line lysates (35 µg/lane). METTL1 (arrow) was detected using the purified Pab.