



[Go to Product page](#)

Datasheet for ABIN653848
anti-RPL17 antibody (C-Term)

2 Images

Overview

Quantity:	400 µL
Target:	RPL17
Binding Specificity:	AA 156-184, C-Term
Reactivity:	Human
Host:	Rabbit
Clonality:	Polyclonal
Conjugate:	This RPL17 antibody is un-conjugated
Application:	Western Blotting (WB), Immunohistochemistry (Paraffin-embedded Sections) (IHC (p))

Product Details

Immunogen:	This RPL17 antibody is generated from rabbits immunized with a KLH conjugated synthetic peptide between 156-184 amino acids from the C-terminal region of human RPL17.
Clone:	RB24670
Isotype:	Ig Fraction
Predicted Reactivity:	B, Rat
Purification:	This antibody is purified through a protein A column, followed by peptide affinity purification.

Target Details

Target:	RPL17
Alternative Name:	RPL17 (RPL17 Products)

Target Details

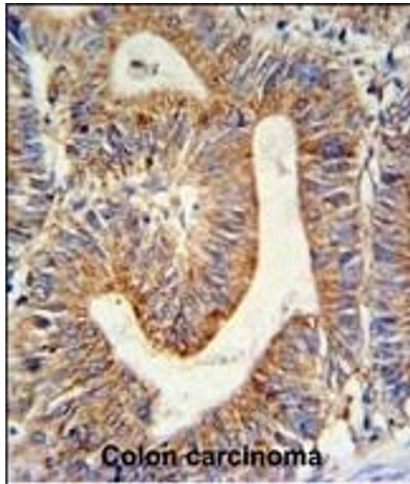
Background:	Ribosomes, the organelles that catalyze protein synthesis, consist of a small 40S subunit and a large 60S subunit. Together these subunits are composed of 4 RNA species and approximately 80 structurally distinct proteins. This gene encodes a ribosomal protein that is a component of the 60S subunit. The protein belongs to the L22P family of ribosomal proteins. It is located in the cytoplasm. This gene has been referred to as rplL23 because the encoded protein shares amino acid identity with ribosomal protein L23 from <i>Halobacterium marismortui</i> , however, its official symbol is RPL17.
Molecular Weight:	21397
Gene ID:	6139
NCBI Accession:	NP_000976 , NP_001030178 , NP_001186269 , NP_001186270 , NP_001186271 , NP_001186272 , NP_001186273 , NP_001186274 , NP_001186284
UniProt:	P18621

Application Details

Application Notes:	WB: 1:1000. IHC-P: 1:50~100
Restrictions:	For Research Use only

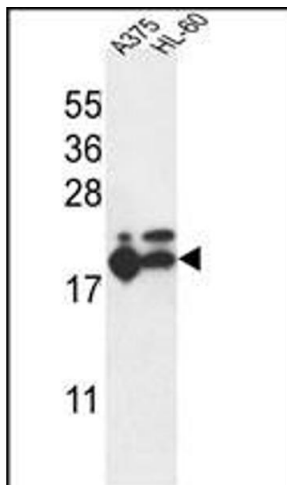
Handling

Format:	Liquid
Buffer:	Purified polyclonal antibody supplied in PBS with 0.09 % (W/V) sodium azide.
Preservative:	Sodium azide
Precaution of Use:	This product contains Sodium azide: a POISONOUS AND HAZARDOUS SUBSTANCE which should be handled by trained staff only.
Storage:	4 °C,-20 °C
Storage Comment:	Maintain refrigerated at 2-8 °C for up to 6 months. For long term storage store at -20 °C in small aliquots to prevent freeze-thaw cycles.
Expiry Date:	6 months



Immunohistochemistry (Paraffin-embedded Sections)

Image 1. RPL17 Antibody (C-term) (ABIN653848 and ABIN2843111) IHC analysis in formalin fixed and paraffin embedded colon carcinoma followed by peroxidase conjugation of the secondary antibody and DAB staining. This data demonstrates the use of the RPL17 Antibody (C-term) for immunohistochemistry. Clinical relevance has not been evaluated.



Western Blotting

Image 2. RPL17 Antibody (C-term) (ABIN653848 and ABIN2843111) western blot analysis in ,HL-60 cell line lysates (35 µg/lane). This demonstrates the RPL17 antibody detected the RPL17 protein (arrow).