

Datasheet for ABIN653849

anti-PYCR1 antibody (C-Term)

3 Images

1 Publication

[Go to Product page](#)

Overview

Quantity:	400 µL
Target:	PYCR1
Binding Specificity:	AA 291-319, C-Term
Reactivity:	Human
Host:	Rabbit
Clonality:	Polyclonal
Conjugate:	This PYCR1 antibody is un-conjugated
Application:	Western Blotting (WB), Flow Cytometry (FACS), Immunohistochemistry (Paraffin-embedded Sections) (IHC (p))

Product Details

Immunogen:	This PYCR1 antibody is generated from rabbits immunized with a KLH conjugated synthetic peptide between 291-319 amino acids from the C-terminal region of human PYCR1.
Clone:	RB24671
Isotype:	IgG
Purification:	This antibody is purified through a protein A column, followed by peptide affinity purification.

Target Details

Target:	PYCR1
Alternative Name:	PYCR1 (PYCR1 Products)

Target Details

Background:	This gene encodes an enzyme that catalyzes the NAD(P)H-dependent conversion of pyrroline-5-carboxylate to proline. This enzyme may also play a physiologic role in the generation of NADP(+) in some cell types. The protein forms a homopolymer and localizes to the mitochondrion.
Molecular Weight:	33361
Gene ID:	5831
NCBI Accession:	NP_001269209 , NP_001269210 , NP_008838 , NP_722546
UniProt:	P32322

Application Details

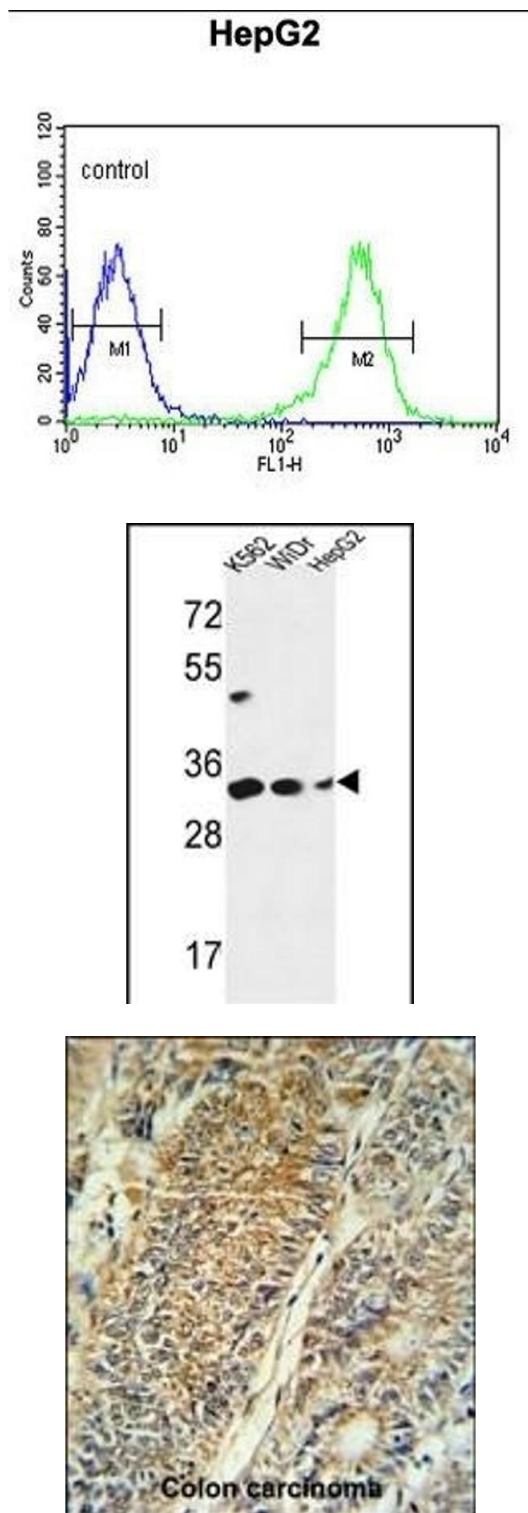
Application Notes:	WB: 1:1000. IHC-P: 1:50~100. FC: 1:10~50
Restrictions:	For Research Use only

Handling

Format:	Liquid
Buffer:	Purified polyclonal antibody supplied in PBS with 0.09 % (W/V) sodium azide.
Preservative:	Sodium azide
Precaution of Use:	This product contains Sodium azide: a POISONOUS AND HAZARDOUS SUBSTANCE which should be handled by trained staff only.
Storage:	4 °C,-20 °C
Storage Comment:	Maintain refrigerated at 2-8 °C for up to 6 months. For long term storage store at -20 °C in small aliquots to prevent freeze-thaw cycles.
Expiry Date:	6 months

Publications

Product cited in:	Han, Rha, Chi: "MED25 is a mediator component of HNF4α-driven transcription leading to insulin secretion in pancreatic beta-cells." in: PLoS ONE , Vol. 7, Issue 8, pp. e44007, (2013) (PubMed).
-------------------	---



Flow Cytometry

Image 1. PYCR1 Antibody (C-term) (ABIN653849 and ABIN2843112) flow cytometric analysis of HepG2 cells (right histogram) compared to a negative control cell (left histogram). FITC-conjugated goat-anti-rabbit secondary antibodies were used for the analysis.

Western Blotting

Image 2. PYCR1 Antibody (C-term) (ABIN653849 and ABIN2843112) western blot analysis in K562, WiDr, HepG2 cell line lysates (35 µg/lane). This demonstrates the PYCR1 antibody detected the PYCR1 protein (arrow).

Immunohistochemistry (Paraffin-embedded Sections)

Image 3. PYCR1 Antibody (C-term) (ABIN653849 and ABIN2843112) IHC analysis in formalin fixed and paraffin embedded colon carcinoma followed by peroxidase conjugation of the secondary antibody and DAB staining. This data demonstrates the use of the PYCR1 Antibody (C-term) for immunohistochemistry. Clinical relevance has not been evaluated.