

Datasheet for ABIN653855
anti-DDX6 antibody (AA 348-375)[Go to Product page](#)

2 Images

Overview

Quantity:	400 µL
Target:	DDX6
Binding Specificity:	AA 348-375
Reactivity:	Human
Host:	Rabbit
Clonality:	Polyclonal
Conjugate:	This DDX6 antibody is un-conjugated
Application:	Western Blotting (WB), Immunohistochemistry (Paraffin-embedded Sections) (IHC (p))

Product Details

Immunogen:	This DDX6 antibody is generated from rabbits immunized with a KLH conjugated synthetic peptide between 348-375 amino acids from the Central region of human DDX6.
Clone:	RB24879
Isotype:	Ig Fraction
Predicted Reactivity:	C, M, X
Purification:	This antibody is purified through a protein A column, followed by peptide affinity purification.

Target Details

Target:	DDX6
Alternative Name:	DDX6 (DDX6 Products)

Target Details

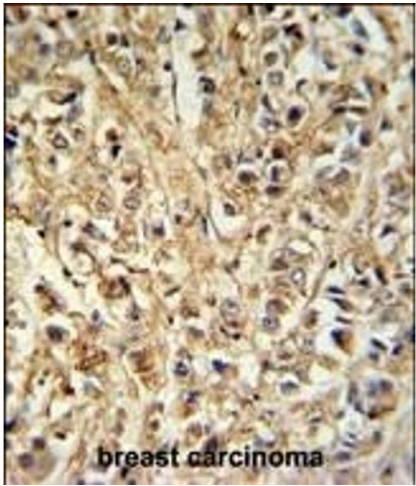
Background:	This gene encodes a member of the DEAD box protein family. The protein is an RNA helicase found in P-bodies and stress granules, and functions in translation suppression and mRNA degradation. It is required for microRNA-induced gene silencing.
Molecular Weight:	54417
Gene ID:	1656
NCBI Accession:	NP_001244120 , NP_004388
UniProt:	P26196
Pathways:	Ribonucleoprotein Complex Subunit Organization

Application Details

Application Notes:	WB: 1:1000. IHC-P: 1:50~100
Restrictions:	For Research Use only

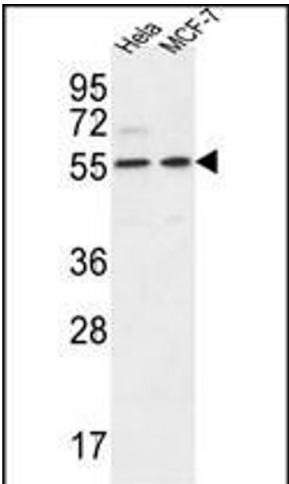
Handling

Format:	Liquid
Buffer:	Purified polyclonal antibody supplied in PBS with 0.09 % (W/V) sodium azide.
Preservative:	Sodium azide
Precaution of Use:	This product contains Sodium azide: a POISONOUS AND HAZARDOUS SUBSTANCE which should be handled by trained staff only.
Storage:	4 °C,-20 °C
Storage Comment:	Maintain refrigerated at 2-8 °C for up to 6 months. For long term storage store at -20 °C in small aliquots to prevent freeze-thaw cycles.
Expiry Date:	6 months



Immunohistochemistry (Paraffin-embedded Sections)

Image 1. DDX6 Antibody (Center) (ABIN653855 and ABIN2843115) IHC analysis in formalin fixed and paraffin embedded breast carcinoma followed by peroxidase conjugation of the secondary antibody and DAB staining. This data demonstrates the use of the DDX6 Antibody (Center) for immunohistochemistry. Clinical relevance has not been evaluated.



Western Blotting

Image 2. DDX6 Antibody (Center) (ABIN653855 and ABIN2843115) western blot analysis in HeLa,MCF-7 cell line lysates (35 µg/lane).This demonstrates the DDX6 antibody detected the DDX6 protein (arrow).