

Datasheet for ABIN653866
anti-ZNF160 antibody (N-Term)[Go to Product page](#)

2 Images

Overview

Quantity:	400 µL
Target:	ZNF160
Binding Specificity:	AA 143-171, N-Term
Reactivity:	Human
Host:	Rabbit
Clonality:	Polyclonal
Conjugate:	This ZNF160 antibody is un-conjugated
Application:	Western Blotting (WB), Flow Cytometry (FACS)

Product Details

Immunogen:	This ZN160 antibody is generated from rabbits immunized with a KLH conjugated synthetic peptide between 143-171 amino acids from the N-terminal region of human ZN160.
Clone:	RB24949
Isotype:	Ig Fraction
Purification:	This antibody is purified through a protein A column, followed by peptide affinity purification.

Target Details

Target:	ZNF160
Alternative Name:	ZN160 (ZNF160 Products)
Background:	The protein encoded by this gene is a Kruppel-related zinc finger protein which is characterized

Target Details

by the presence of an N-terminal repressor domain, the Kruppel-associated box (KRAB). The KRAB domain is a potent repressor of transcription, thus this protein may function in transcription regulation.

Molecular Weight: 94112

Gene ID: 90338

NCBI Accession: [NP_001096073](#), [NP_150630](#), [NP_942596](#)

UniProt: [Q9HCG1](#)

Application Details

Application Notes: WB: 1:1000. FC: 1:10~50

Restrictions: For Research Use only

Handling

Format: Liquid

Buffer: Purified polyclonal antibody supplied in PBS with 0.09 % (W/V) sodium azide.

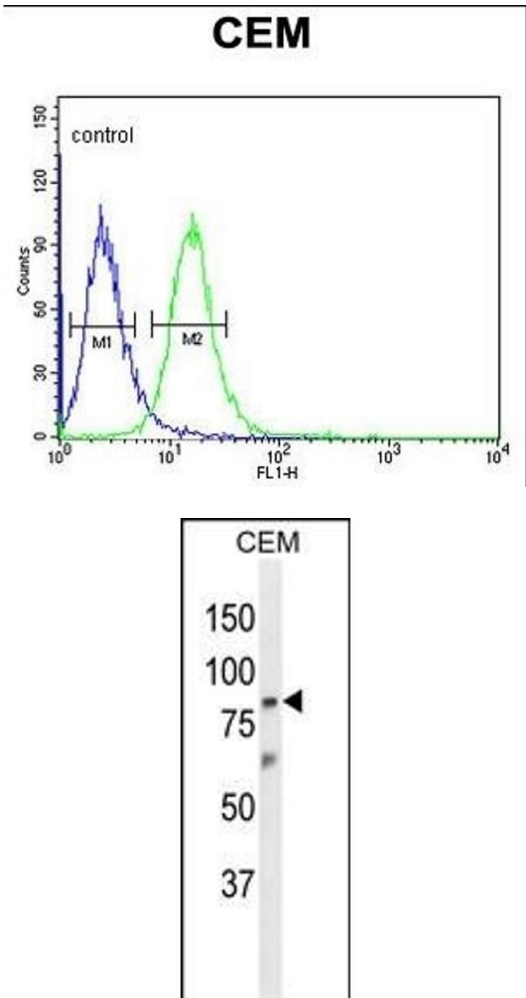
Preservative: Sodium azide

Precaution of Use: This product contains Sodium azide: a POISONOUS AND HAZARDOUS SUBSTANCE which should be handled by trained staff only.

Storage: 4 °C, -20 °C

Storage Comment: Maintain refrigerated at 2-8 °C for up to 6 months. For long term storage store at -20 °C in small aliquots to prevent freeze-thaw cycles.

Expiry Date: 6 months



Flow Cytometry

Image 1. Z Antibody (N-term) (ABIN653866 and ABIN2843121) flow cytometric analysis of CEM cells (right histogram) compared to a negative control cell (left histogram). FITC-conjugated goat-anti-rabbit secondary antibodies were used for the analysis.

Western Blotting

Image 2. Western blot analysis of Z Antibody (N-term) (ABIN653866 and ABIN2843121) in CEM cell line lysates (35 µg/lane). Z (arrow) was detected using the purified Pab.