

Datasheet for ABIN653874
anti-RPRD1B antibody (C-Term)[Go to Product page](#)

2 Images

Overview

Quantity:	400 µL
Target:	RPRD1B
Binding Specificity:	AA 254-282, C-Term
Reactivity:	Human
Host:	Rabbit
Clonality:	Polyclonal
Conjugate:	This RPRD1B antibody is un-conjugated
Application:	Western Blotting (WB), Flow Cytometry (FACS)

Product Details

Immunogen:	This RPR1B antibody is generated from rabbits immunized with a KLH conjugated synthetic peptide between 254-282 amino acids from the C-terminal region of human RPR1B.
Clone:	RB25222
Isotype:	Ig Fraction
Predicted Reactivity:	M
Purification:	This antibody is purified through a protein A column, followed by peptide affinity purification.

Target Details

Target:	RPRD1B
Alternative Name:	RPR1B (RPRD1B Products)

Target Details

Molecular Weight:	36900
Gene ID:	58490
NCBI Accession:	NP_067038
UniProt:	Q9NQG5

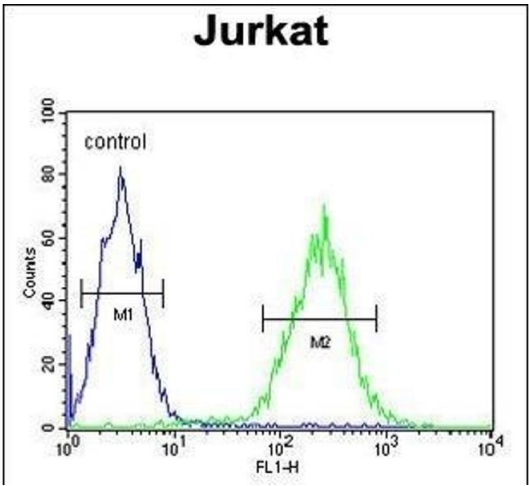
Application Details

Application Notes:	WB: 1:1000. FC: 1:10~50
Restrictions:	For Research Use only

Handling

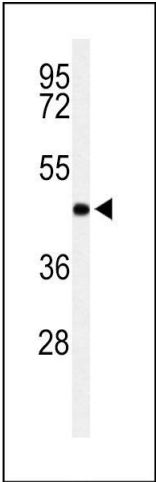
Format:	Liquid
Buffer:	Purified polyclonal antibody supplied in PBS with 0.09 % (W/V) sodium azide.
Preservative:	Sodium azide
Precaution of Use:	This product contains Sodium azide: a POISONOUS AND HAZARDOUS SUBSTANCE which should be handled by trained staff only.
Storage:	4 °C,-20 °C
Storage Comment:	Maintain refrigerated at 2-8 °C for up to 6 months. For long term storage store at -20 °C in small aliquots to prevent freeze-thaw cycles.
Expiry Date:	6 months

Images



Flow Cytometry

Image 1. RPR1B Antibody (C-term) (ABIN653874 and ABIN2843125) flow cytometric analysis of Jurkat cells (right histogram) compared to a negative control cell (left histogram). FITC-conjugated goat-anti-rabbit secondary antibodies were used for the analysis.



Western Blotting

Image 2. Western blot analysis of RPR1B Antibody (C-term) (ABIN653874 and ABIN2843125) in Jurkat cell line lysates (35 µg/lane). RPR1B (arrow) was detected using the purified Pab.