



[Go to Product page](#)

Datasheet for ABIN653875

anti-Arylsulfatase I antibody (C-Term)

2 Images

Overview

Quantity:	400 µL
Target:	Arylsulfatase I (ARSI)
Binding Specificity:	AA 454-483, C-Term
Reactivity:	Human
Host:	Rabbit
Clonality:	Polyclonal
Conjugate:	This Arylsulfatase I antibody is un-conjugated
Application:	Western Blotting (WB), Flow Cytometry (FACS)

Product Details

Immunogen:	This ARSI antibody is generated from rabbits immunized with a KLH conjugated synthetic peptide between 454-483 amino acids from the C-terminal region of human ARSI.
Clone:	RB25363
Isotype:	Ig Fraction
Predicted Reactivity:	M
Purification:	This antibody is purified through a protein A column, followed by peptide affinity purification.

Target Details

Target:	Arylsulfatase I (ARSI)
Alternative Name:	ARSI (ARSI Products)

Target Details

Background: Sulfatases (EC 3.1.5.6), such as ARSI, hydrolyze sulfate esters from sulfated steroids, carbohydrates, proteoglycans, and glycolipids. They are involved in hormone biosynthesis, modulation of cell signaling, and degradation of macromolecules

Molecular Weight: 64030

Gene ID: 340075

NCBI Accession: [NP_001012301](#)

UniProt: [Q5FYB1](#)

Application Details

Application Notes: WB: 1:1000. FC: 1:10~50

Restrictions: For Research Use only

Handling

Format: Liquid

Buffer: Purified polyclonal antibody supplied in PBS with 0.09 % (W/V) sodium azide.

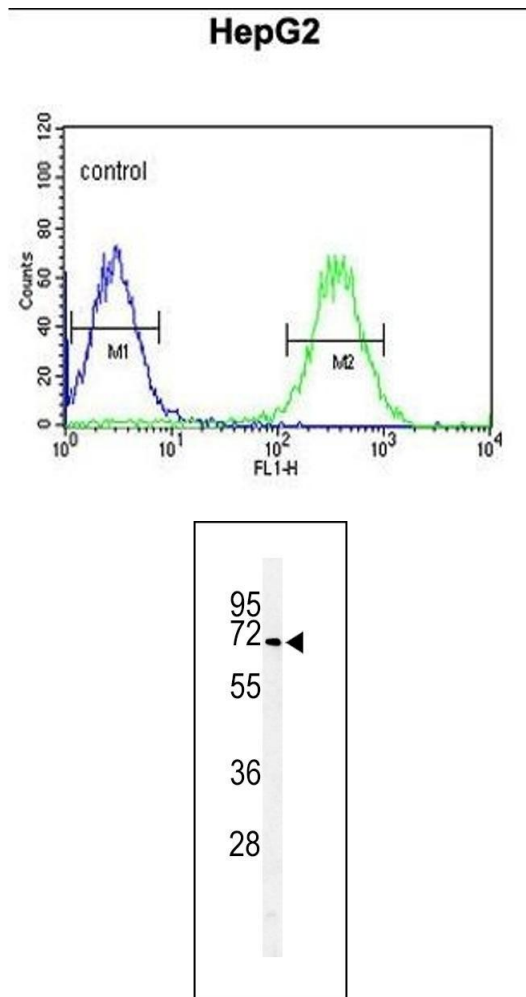
Preservative: Sodium azide

Precaution of Use: This product contains Sodium azide: a POISONOUS AND HAZARDOUS SUBSTANCE which should be handled by trained staff only.

Storage: 4 °C, -20 °C

Storage Comment: Maintain refrigerated at 2-8 °C for up to 6 months. For long term storage store at -20 °C in small aliquots to prevent freeze-thaw cycles.

Expiry Date: 6 months



Flow Cytometry

Image 1. ARSI Antibody (C-term) (ABIN653875 and ABIN2843126) flow cytometric analysis of HepG2 cells (right histogram) compared to a negative control cell (left histogram). FITC-conjugated goat-anti-rabbit secondary antibodies were used for the analysis.

Western Blotting

Image 2. Western blot analysis of ARSI Antibody (C-term) (ABIN653875 and ABIN2843126) in HepG2 cell line lysates (35 µg/lane). ARSI (arrow) was detected using the purified Pab.