



[Go to Product page](#)

Datasheet for ABIN653879

anti-INTS10 antibody (C-Term)

2 Images

Overview

Quantity:	400 µL
Target:	INTS10
Binding Specificity:	AA 516-545, C-Term
Reactivity:	Human
Host:	Rabbit
Clonality:	Polyclonal
Conjugate:	This INTS10 antibody is un-conjugated
Application:	Western Blotting (WB), Flow Cytometry (FACS)

Product Details

Immunogen:	This INT10 antibody is generated from rabbits immunized with a KLH conjugated synthetic peptide between 516-545 amino acids from the C-terminal region of human INT10.
Clone:	RB25396
Isotype:	Ig Fraction
Predicted Reactivity:	Pr
Purification:	This antibody is purified through a protein A column, followed by peptide affinity purification.

Target Details

Target:	INTS10
Alternative Name:	INT10 (INTS10 Products)

Target Details

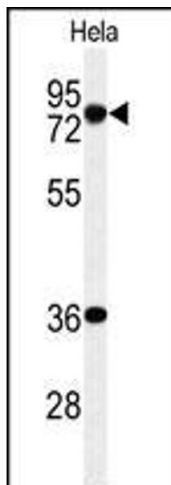
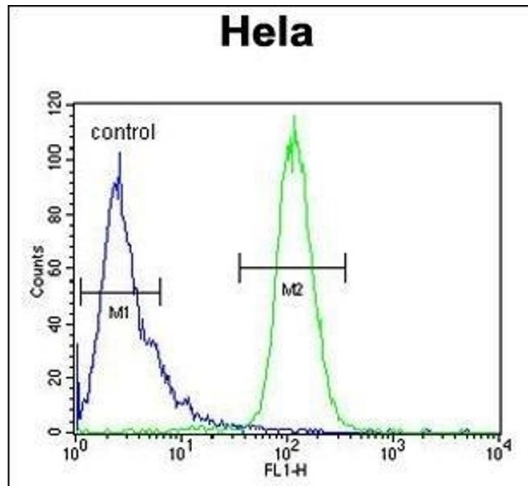
Background:	INTS10 is a subunit of the Integrator complex, which associates with the C-terminal domain of RNA polymerase II large subunit (POLR2A, MIM 180660) and mediates 3-prime end processing of small nuclear RNAs U1.
Molecular Weight:	82236
Gene ID:	55174
NCBI Accession:	NP_060612
UniProt:	Q9NVR2

Application Details

Application Notes:	WB: 1:1000. FC: 1:10~50
Restrictions:	For Research Use only

Handling

Format:	Liquid
Buffer:	Purified polyclonal antibody supplied in PBS with 0.09 % (W/V) sodium azide.
Preservative:	Sodium azide
Precaution of Use:	This product contains Sodium azide: a POISONOUS AND HAZARDOUS SUBSTANCE which should be handled by trained staff only.
Storage:	4 °C, -20 °C
Storage Comment:	Maintain refrigerated at 2-8 °C for up to 6 months. For long term storage store at -20 °C in small aliquots to prevent freeze-thaw cycles.
Expiry Date:	6 months



Flow Cytometry

Image 1. INT10 Antibody (C-term) (ABIN653879 and ABIN2843127) flow cytometric analysis of HeLa cells (right histogram) compared to a negative control cell (left histogram). FITC-conjugated goat-anti-rabbit secondary antibodies were used for the analysis.

Western Blotting

Image 2. Western blot analysis of INT10 Antibody (C-term) (ABIN653879 and ABIN2843127) in HeLa cell line lysates (35 µg/lane). INT10 (arrow) was detected using the purified Pab.