



[Go to Product page](#)

Datasheet for ABIN653885  
**anti-C3orf58 antibody (AA 159-188)**

2 Images

Overview

Quantity:	400 µL
Target:	C3orf58 (C3ORF58)
Binding Specificity:	AA 159-188
Reactivity:	Human, Mouse
Host:	Rabbit
Clonality:	Polyclonal
Conjugate:	This C3orf58 antibody is un-conjugated
Application:	Western Blotting (WB), Immunohistochemistry (Paraffin-embedded Sections) (IHC (p))

Product Details

Immunogen:	This CC058 antibody is generated from rabbits immunized with a KLH conjugated synthetic peptide between 159-188 amino acids from the Central region of human CC058.
Clone:	RB25760
Isotype:	Ig Fraction
Purification:	This antibody is purified through a protein A column, followed by peptide affinity purification.

Target Details

Target:	C3orf58 (C3ORF58)
Alternative Name:	CC058 ( <a href="#">C3ORF58 Products</a> )
Molecular Weight:	49482

## Target Details

Gene ID:	205428
NCBI Accession:	<a href="#">NP_001127942</a> , <a href="#">NP_775823</a>
UniProt:	<a href="#">Q8NDZ4</a>

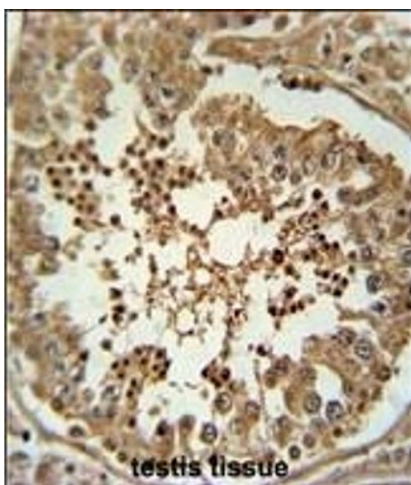
## Application Details

Application Notes:	WB: 1:1000. IHC-P: 1:50~100
Restrictions:	For Research Use only

## Handling

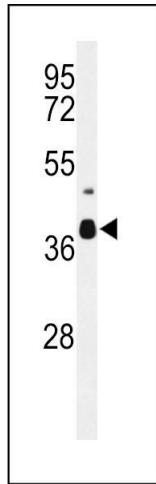
Format:	Liquid
Buffer:	Purified polyclonal antibody supplied in PBS with 0.09 % (W/V) sodium azide.
Preservative:	Sodium azide
Precaution of Use:	This product contains Sodium azide: a POISONOUS AND HAZARDOUS SUBSTANCE which should be handled by trained staff only.
Storage:	4 °C,-20 °C
Storage Comment:	Maintain refrigerated at 2-8 °C for up to 6 months. For long term storage store at -20 °C in small aliquots to prevent freeze-thaw cycles.
Expiry Date:	6 months

## Images



### Immunohistochemistry (Paraffin-embedded Sections)

**Image 1.** C Antibody (Center) (ABIN653885 and ABIN2843132) immunohistochemistry analysis in formalin fixed and paraffin embedded human testis tissue followed by peroxidase conjugation of the secondary antibody and DAB staining. This data demonstrates the use of the C Antibody (Center) for immunohistochemistry. Clinical relevance has not been evaluated.



### Western Blotting

**Image 2.** Western blot analysis of C Antibody (Center) (ABIN653885 and ABIN2843132) in mouse cerebellum tissue lysates (35 µg/lane). C (arrow) was detected using the purified Pab.