

Datasheet for ABIN653895

anti-PLA2G6 antibody (AA 551-580)

4 Images

[Go to Product page](#)

Overview

Quantity:	400 µL
Target:	PLA2G6
Binding Specificity:	AA 551-580
Reactivity:	Human
Host:	Rabbit
Clonality:	Polyclonal
Conjugate:	This PLA2G6 antibody is un-conjugated
Application:	Western Blotting (WB), Immunohistochemistry (Paraffin-embedded Sections) (IHC (p)), Immunofluorescence (IF), Flow Cytometry (FACS)

Product Details

Immunogen:	This PLA2G6 antibody is generated from rabbits immunized with a KLH conjugated synthetic peptide between 551-580 amino acids from the Central region of human PLA2G6.
Clone:	RB18569
Isotype:	Ig Fraction
Purification:	This antibody is prepared by Saturated Ammonium Sulfate (SAS) precipitation followed by dialysis against PBS.

Target Details

Target:	PLA2G6
Alternative Name:	PLA2G6 (PLA2G6 Products)

Target Details

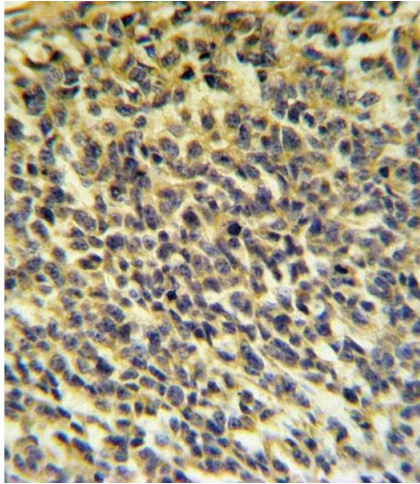
Background:	The protein encoded by this gene is an A2 phospholipase, a class of enzyme that catalyzes the release of fatty acids from phospholipids. The encoded protein may play a role in phospholipid remodelling, arachidonic acid release, leukotriene and prostaglandin synthesis, fas-mediated apoptosis, and transmembrane ion flux in glucose-stimulated B-cells.
Molecular Weight:	89903
Gene ID:	8398
NCBI Accession:	NP_001004426 , NP_001186491 , NP_003551
UniProt:	O60733
Pathways:	Positive Regulation of Peptide Hormone Secretion

Application Details

Application Notes:	IF: 1:10~50. WB: 1:1000. IHC-P: 1:10~50. FC: 1:10~50
Restrictions:	For Research Use only

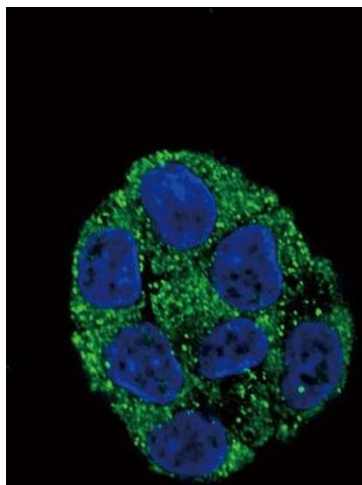
Handling

Format:	Liquid
Buffer:	Purified polyclonal antibody supplied in PBS with 0.09 % (W/V) sodium azide.
Preservative:	Sodium azide
Precaution of Use:	This product contains Sodium azide: a POISONOUS AND HAZARDOUS SUBSTANCE which should be handled by trained staff only.
Storage:	4 °C,-20 °C
Storage Comment:	Maintain refrigerated at 2-8 °C for up to 6 months. For long term storage store at -20 °C in small aliquots to prevent freeze-thaw cycles.
Expiry Date:	6 months



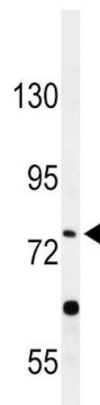
Immunohistochemistry (Paraffin-embedded Sections)

Image 1. PLA2G6 Antibody (Center) (ABIN653895 and ABIN2843138) IHC analysis in formalin fixed and paraffin embedded testis carcinoma followed by peroxidase conjugation of the secondary antibody and DAB staining. This data demonstrates the use of the PLA2G6 Antibody (Center) for immunohistochemistry. Clinical relevance has not been evaluated.



Immunofluorescence

Image 2. Confocal immunofluorescent analysis of PLA2G6 Antibody (Center) (ABIN653895 and ABIN2843138) with HepG2 cell followed by Alexa Fluor[®]488-conjugated goat anti-rabbit IgG (green). DAPI was used to stain the cell nuclear (blue).



Western Blotting

Image 3. Western blot analysis of PLA2G6 Antibody (Center) (ABIN653895 and ABIN2843138) in HepG2 cell line lysates (35 µg/lane). PLA2G6 (arrow) was detected using the purified Pab.

Please check the [product details page](#) for more images. Overall 4 images are available for ABIN653895.