

Datasheet for ABIN653900  
**anti-CD1e antibody (AA 184-212)**



[Go to Product page](#)

4 Images

## Overview

Quantity:	400 µL
Target:	CD1e
Binding Specificity:	AA 184-212
Reactivity:	Human
Host:	Rabbit
Clonality:	Polyclonal
Conjugate:	This CD1e antibody is un-conjugated
Application:	Western Blotting (WB), Flow Cytometry (FACS), Immunofluorescence (IF), Immunohistochemistry (Paraffin-embedded Sections) (IHC (p))

## Product Details

Immunogen:	This CD1E antibody is generated from rabbits immunized with a KLH conjugated synthetic peptide between 184-212 amino acids from the Central region of human CD1E.
Clone:	RB26783
Isotype:	Ig Fraction
Purification:	This antibody is purified through a protein A column, followed by peptide affinity purification.

## Target Details

Target:	CD1e
Alternative Name:	CD1E ( <a href="#">CD1e Products</a> )

## Target Details

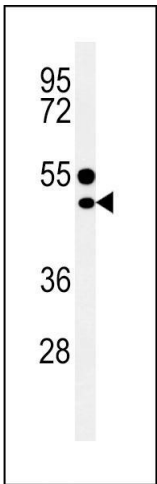
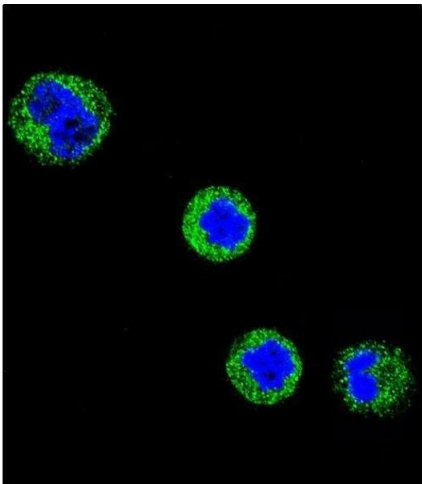
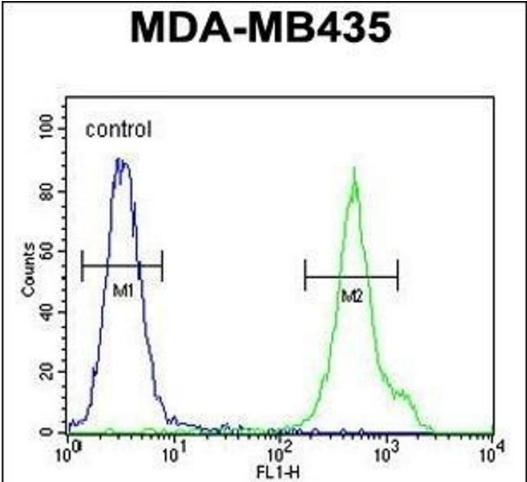
Background:	CD1E encodes a member of the CD1 family of transmembrane glycoproteins, which are structurally related to the major histocompatibility complex (MHC) proteins and form heterodimers with beta-2-microglobulin. The CD1 proteins mediate the presentation of primarily lipid and glycolipid antigens of self or microbial origin to T cells. The human genome contains five CD1 family genes organized in a cluster on chromosome 1. The CD1 family members are thought to differ in their cellular localization and specificity for particular lipid ligands. The protein encoded by this gene localizes within Golgi compartments, endosomes, and lysosomes, and is cleaved into a stable soluble form. The soluble form is required for the intracellular processing of some glycolipids into a form that can be presented by other CD1 family members.
Molecular Weight:	43626
Gene ID:	913
NCBI Accession:	<a href="#">NP_001036048</a> , <a href="#">NP_001036049</a> , <a href="#">NP_001036050</a> , <a href="#">NP_001036051</a> , <a href="#">NP_001036052</a> , <a href="#">NP_001172036</a> , <a href="#">NP_001172037</a> , <a href="#">NP_001172039</a> , <a href="#">NP_001172041</a> , <a href="#">NP_001172042</a> , <a href="#">NP_001172043</a> , <a href="#">NP_001172044</a> , <a href="#">NP_112155</a>
UniProt:	<a href="#">P15812</a>

## Application Details

Application Notes:	IF: 1:10~50. WB: 1:1000. IHC-P: 1:50~100. FC: 1:10~50
Restrictions:	For Research Use only

## Handling

Format:	Liquid
Buffer:	Purified polyclonal antibody supplied in PBS with 0.09 % (W/V) sodium azide.
Preservative:	Sodium azide
Precaution of Use:	This product contains Sodium azide: a POISONOUS AND HAZARDOUS SUBSTANCE which should be handled by trained staff only.
Storage:	4 °C, -20 °C
Storage Comment:	Maintain refrigerated at 2-8 °C for up to 6 months. For long term storage store at -20 °C in small aliquots to prevent freeze-thaw cycles.
Expiry Date:	6 months



### Flow Cytometry

**Image 1.** CD1E Antibody (Center) (ABIN653900 and ABIN2843142) flow cytometric analysis of MDA-M cells (right histogram) compared to a negative control cell (left histogram). FITC-conjugated goat-anti-rabbit secondary antibodies were used for the analysis.

### Immunofluorescence

**Image 2.** Confocal immunofluorescent analysis of CD1E Antibody (Center) (ABIN653900 and ABIN2843142) with MDA-M cell followed by Alexa Fluor 488-conjugated goat anti-rabbit IgG (green). DAPI was used to stain the cell nuclear (blue).

### Western Blotting

**Image 3.** CD1E Antibody (Center) (ABIN653900 and ABIN2843142) western blot analysis in MDA-M cell line lysates (35 µg/lane). This demonstrates the CD1E antibody detected the CD1E protein (arrow).

Please check the [product details page](#) for more images. Overall 4 images are available for ABIN653900.