



[Go to Product page](#)

Datasheet for ABIN653906
anti-IREM1 antibody (N-Term)

3 Images

Overview

Quantity:	400 µL
Target:	IREM1
Binding Specificity:	AA 56-84, N-Term
Reactivity:	Human
Host:	Rabbit
Clonality:	Polyclonal
Conjugate:	This IREM1 antibody is un-conjugated
Application:	Western Blotting (WB), Flow Cytometry (FACS), Immunohistochemistry (Paraffin-embedded Sections) (IHC (p))

Product Details

Immunogen:	This CLM1 antibody is generated from rabbits immunized with a KLH conjugated synthetic peptide between 56-84 amino acids from the N-terminal region of human CLM1.
Clone:	RB22264
Isotype:	Ig Fraction
Purification:	This antibody is purified through a protein A column, followed by peptide affinity purification.

Target Details

Target:	IREM1
Alternative Name:	CLM1 (IREM1 Products)

Target Details

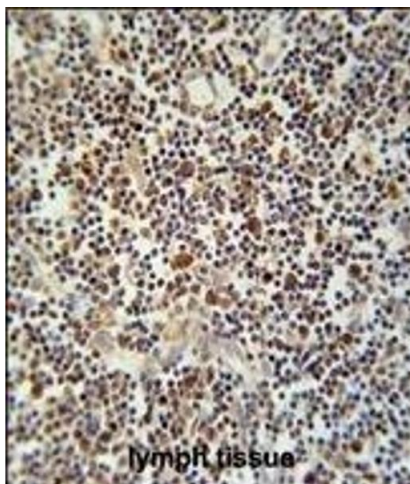
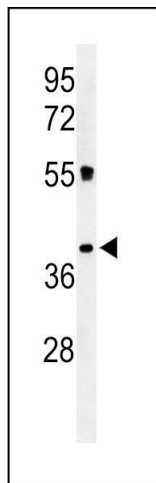
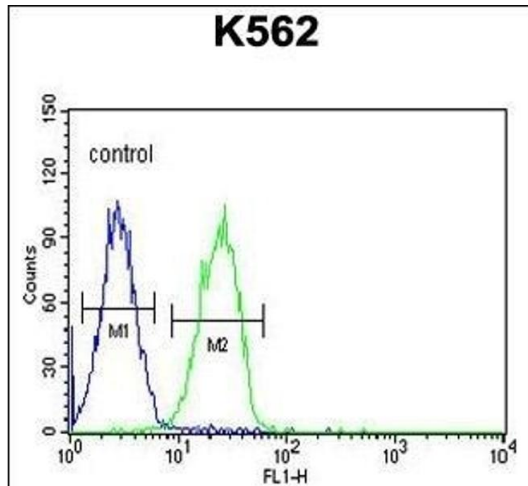
Background:	CLM1 is an inhibitory receptor of the Ig superfamily expressed on myeloid cells. It mediates negative regulatory signals by recruiting SHP1 (PTPN6, MIM 176883) or SHIP.
Molecular Weight:	32335
Gene ID:	146722
NCBI Accession:	NP_620587
UniProt:	Q8TDQ1

Application Details

Application Notes:	WB: 1:1000. IHC-P: 1:50~100. FC: 1:10~50
Restrictions:	For Research Use only

Handling

Format:	Liquid
Buffer:	Purified polyclonal antibody supplied in PBS with 0.09 % (W/V) sodium azide.
Preservative:	Sodium azide
Precaution of Use:	This product contains Sodium azide: a POISONOUS AND HAZARDOUS SUBSTANCE which should be handled by trained staff only.
Storage:	4 °C,-20 °C
Storage Comment:	Maintain refrigerated at 2-8 °C for up to 6 months. For long term storage store at -20 °C in small aliquots to prevent freeze-thaw cycles.
Expiry Date:	6 months



Flow Cytometry

Image 1. CLM1 Antibody (N-term) (ABIN653906 and ABIN2843144) flow cytometric analysis of K562 cells (right histogram) compared to a negative control cell (left histogram). FITC-conjugated goat-anti-rabbit secondary antibodies were used for the analysis.

Western Blotting

Image 2. Western blot analysis of CLM1 Antibody (N-term) (ABIN653906 and ABIN2843144) in K562 cell line lysates (35 µg/lane). CLM1 (arrow) was detected using the purified Pab.

Immunohistochemistry (Paraffin-embedded Sections)

Image 3. CLM1 Antibody (N-term) (ABIN653906 and ABIN2843144) immunohistochemistry analysis in formalin fixed and paraffin embedded human lymph tissue followed by peroxidase conjugation of the secondary antibody and DAB staining. This data demonstrates the use of the CLM1 Antibody (N-term) for immunohistochemistry. Clinical relevance has not been evaluated.