

Datasheet for ABIN653909
anti-CIRH1A antibody (N-Term)

3 Images

[Go to Product page](#)

Overview

Quantity:	400 µL
Target:	CIRH1A
Binding Specificity:	AA 116-143, N-Term
Reactivity:	Human
Host:	Rabbit
Clonality:	Polyclonal
Conjugate:	This CIRH1A antibody is un-conjugated
Application:	Western Blotting (WB), Flow Cytometry (FACS), Immunohistochemistry (Paraffin-embedded Sections) (IHC (p))

Product Details

Immunogen:	This CIRH1A antibody is generated from rabbits immunized with a KLH conjugated synthetic peptide between 116-143 amino acids from the N-terminal region of human CIRH1A.
Clone:	RB23136
Isotype:	Ig Fraction
Purification:	This antibody is purified through a protein A column, followed by peptide affinity purification.

Target Details

Target:	CIRH1A
Alternative Name:	CIRH1A (CIRH1A Products)

Target Details

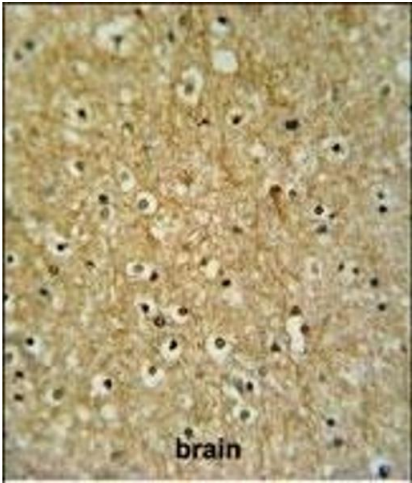
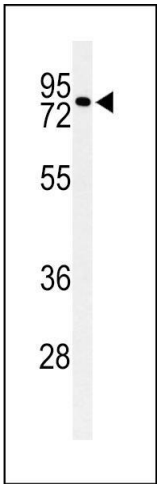
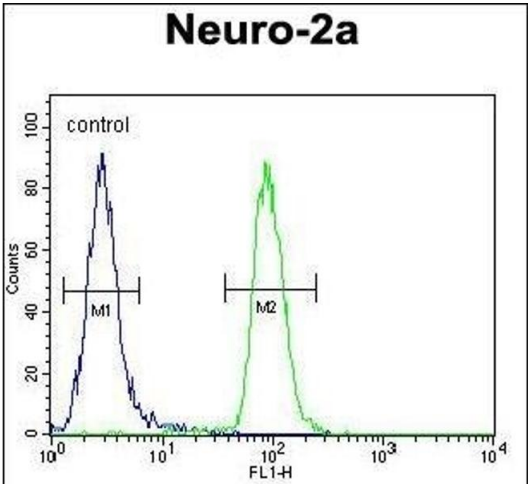
Background:	CIRH1A encodes a WD40-repeat-containing protein that is localized to the nucleolus. Mutation of this gene causes North American Indian childhood cirrhosis, a severe intrahepatic cholestasis that results in transient neonatal jaundice, and progresses to periportal fibrosis and cirrhosis in childhood and adolescence.
Molecular Weight:	76890
Gene ID:	84916
NCBI Accession:	NP_116219
UniProt:	Q969X6

Application Details

Application Notes:	WB: 1:1000. IHC-P: 1:50~100. FC: 1:10~50
Restrictions:	For Research Use only

Handling

Format:	Liquid
Buffer:	Purified polyclonal antibody supplied in PBS with 0.09 % (W/V) sodium azide.
Preservative:	Sodium azide
Precaution of Use:	This product contains Sodium azide: a POISONOUS AND HAZARDOUS SUBSTANCE which should be handled by trained staff only.
Storage:	4 °C,-20 °C
Storage Comment:	Maintain refrigerated at 2-8 °C for up to 6 months. For long term storage store at -20 °C in small aliquots to prevent freeze-thaw cycles.
Expiry Date:	6 months



Flow Cytometry

Image 1. CIRH1A Antibody (N-term) (ABIN653909 and ABIN2843146) flow cytometric analysis of Neuro-2a cells (right histogram) compared to a negative control cell (left histogram). FITC-conjugated goat-anti-rabbit secondary antibodies were used for the analysis.

Western Blotting

Image 2. Western blot analysis of CIRH1A Antibody (N-term) (ABIN653909 and ABIN2843146) in Neuro-2a cell line lysates (35 µg/lane). CIRH1A (arrow) was detected using the purified Pab.

Immunohistochemistry (Paraffin-embedded Sections)

Image 3. CIRH1A Antibody (N-term) (ABIN653909 and ABIN2843146) IHC analysis in formalin fixed and paraffin embedded brain tissue followed by peroxidase conjugation of the secondary antibody and DAB staining. This data demonstrates the use of the CIRH1A Antibody (N-term) for immunohistochemistry. Clinical relevance has not been evaluated.