

Datasheet for ABIN653911

anti-CNPY2/MSAP antibody (C-Term)[Go to Product page](#)**2** Images

Overview

Quantity:	400 µL
Target:	CNPY2/MSAP (CNPY2)
Binding Specificity:	AA 134-162, C-Term
Reactivity:	Human
Host:	Rabbit
Clonality:	Polyclonal
Conjugate:	This CNPY2/MSAP antibody is un-conjugated
Application:	Western Blotting (WB), Flow Cytometry (FACS)

Product Details

Immunogen:	This CNPY2 antibody is generated from rabbits immunized with a KLH conjugated synthetic peptide between 134-162 amino acids from the C-terminal region of human CNPY2.
Clone:	RB25645
Isotype:	Ig Fraction
Predicted Reactivity:	M
Purification:	This antibody is purified through a protein A column, followed by peptide affinity purification.

Target Details

Target:	CNPY2/MSAP (CNPY2)
Alternative Name:	CNPY2 (CNPY2 Products)

Target Details

Background:	CNPY2 is positive regulator of neurite outgrowth by stabilizing myosin regulatory light chain (MRLC). It prevents MIR-mediated MRLC ubiquitination and its subsequent proteasomal degradation.
-------------	--

Molecular Weight:	20652
-------------------	-------

Gene ID:	10330
----------	-------

NCBI Accession:	NP_001177920 , NP_055070
-----------------	--

UniProt:	Q9Y2B0
----------	------------------------

Application Details

Application Notes:	WB: 1:1000. FC: 1:10~50
--------------------	-------------------------

Restrictions:	For Research Use only
---------------	-----------------------

Handling

Format:	Liquid
---------	--------

Buffer:	Purified polyclonal antibody supplied in PBS with 0.09 % (W/V) sodium azide.
---------	--

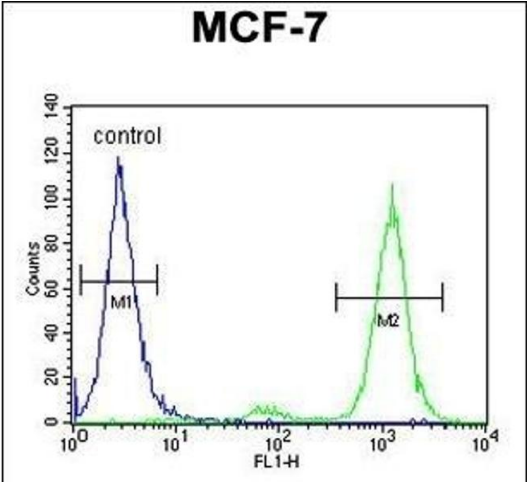
Preservative:	Sodium azide
---------------	--------------

Precaution of Use:	This product contains Sodium azide: a POISONOUS AND HAZARDOUS SUBSTANCE which should be handled by trained staff only.
--------------------	--

Storage:	4 °C, -20 °C
----------	--------------

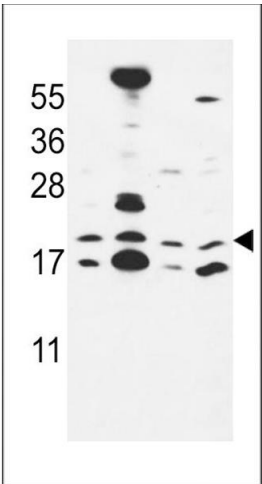
Storage Comment:	Maintain refrigerated at 2-8 °C for up to 6 months. For long term storage store at -20 °C in small aliquots to prevent freeze-thaw cycles.
------------------	--

Expiry Date:	6 months
--------------	----------



Flow Cytometry

Image 1. CNPY2 Antibody (C-term) (ABIN653911 and ABIN2843148) flow cytometric analysis of MCF-7 cells (right histogram) compared to a negative control cell (left histogram). FITC-conjugated goat-anti-rabbit secondary antibodies were used for the analysis.



Western Blotting

Image 2. CNPY2 Antibody (C-term) (ABIN653911 and ABIN2843148) western blot analysis in MCF-7, NCI-HepG2, Hela cell line lysates (35 µg/lane). This demonstrates the CNPY2 antibody detected the CNPY2 protein (arrow).