

Datasheet for ABIN653912  
**anti-RERE antibody (N-Term)**[Go to Product page](#)

3 Images

1 Publication

## Overview

Quantity:	400 µL
Target:	RERE
Binding Specificity:	AA 383-409, N-Term
Reactivity:	Human
Host:	Rabbit
Clonality:	Polyclonal
Conjugate:	This RERE antibody is un-conjugated
Application:	Western Blotting (WB), Flow Cytometry (FACS), Immunohistochemistry (Paraffin-embedded Sections) (IHC (p))

## Product Details

Immunogen:	This RERE antibody is generated from rabbits immunized with a KLH conjugated synthetic peptide between 383-409 amino acids from the N-terminal region of human RERE.
Clone:	RB23369
Isotype:	Ig Fraction
Predicted Reactivity:	M, Rat
Purification:	This antibody is purified through a protein A column, followed by peptide affinity purification.

## Target Details

Target:	RERE
---------	------

## Target Details

Alternative Name:	RERE ( <a href="#">RERE Products</a> )
Background:	RERE encodes a member of the atrophin family of arginine-glutamic acid (RE) dipeptide repeat-containing proteins. The encoded protein co-localizes with a transcription factor in the nucleus, and its overexpression triggers apoptosis. A similar protein in mouse associates with histone deacetylase and is thought to function as a transcriptional co-repressor during embryonic development.
Molecular Weight:	172424
Gene ID:	473
NCBI Accession:	<a href="#">NP_001036146</a> , <a href="#">NP_001036147</a> , <a href="#">NP_036234</a>
UniProt:	<a href="#">Q9P2R6</a>
Pathways:	<a href="#">Protein targeting to Nucleus</a>

## Application Details

Application Notes:	WB: 1:1000. IHC-P: 1:50~100. FC: 1:10~50
Restrictions:	For Research Use only

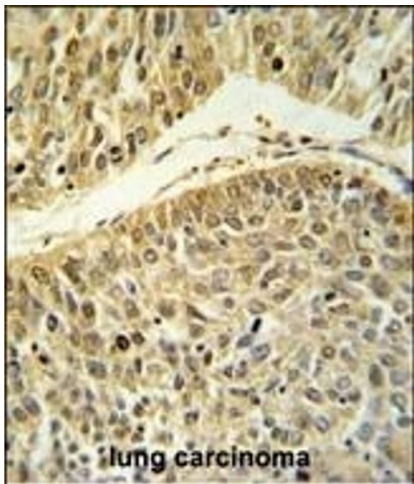
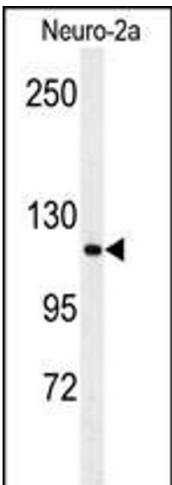
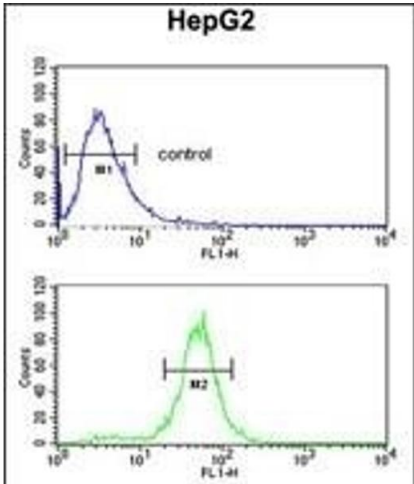
## Handling

Format:	Liquid
Buffer:	Purified polyclonal antibody supplied in PBS with 0.09 % (W/V) sodium azide.
Preservative:	Sodium azide
Precaution of Use:	This product contains Sodium azide: a POISONOUS AND HAZARDOUS SUBSTANCE which should be handled by trained staff only.
Storage:	4 °C,-20 °C
Storage Comment:	Maintain refrigerated at 2-8 °C for up to 6 months. For long term storage store at -20 °C in small aliquots to prevent freeze-thaw cycles.
Expiry Date:	6 months

## Publications

Product cited in:	Han, Rha, Chi: "MED25 is a mediator component of HNF4α-driven transcription leading to insulin secretion in pancreatic beta-cells." in: <b>PLoS ONE</b> , Vol. 7, Issue 8, pp. e44007, (2013) (
-------------------	---

Images



Flow Cytometry

**Image 1.** RERE Antibody (N-term) (ABIN653912 and ABIN2843149) flow cytometric analysis of HepG2 cells (bottom histogram) compared to a negative control cell (top histogram). FITC-conjugated goat-anti-rabbit secondary antibodies were used for the analysis.

Western Blotting

**Image 2.** Western blot analysis of RERE Antibody (N-term) (ABIN653912 and ABIN2843149) in Neuro-2a cell line lysates (35 µg/lane). RERE (arrow) was detected using the purified Pab.

Immunohistochemistry (Paraffin-embedded Sections)

**Image 3.** RERE Antibody (N-term) (ABIN653912 and ABIN2843149) IHC analysis in formalin fixed and paraffin embedded lung carcinoma followed by peroxidase conjugation of the secondary antibody and DAB staining. This data demonstrates the use of the RERE Antibody (N-term) for immunohistochemistry. Clinical relevance has not been evaluated.