

Datasheet for ABIN653916
anti-YPEL5 antibody (C-Term)[Go to Product page](#)

3 Images

Overview

Quantity:	400 µL
Target:	YPEL5
Binding Specificity:	AA 92-121, C-Term
Reactivity:	Human, Mouse
Host:	Rabbit
Clonality:	Polyclonal
Conjugate:	This YPEL5 antibody is un-conjugated
Application:	Western Blotting (WB), Immunohistochemistry (Paraffin-embedded Sections) (IHC (p))

Product Details

Immunogen:	This YPEL5 antibody is generated from rabbits immunized with a KLH conjugated synthetic peptide between 92-121 amino acids from the C-terminal region of human YPEL5.
Clone:	RB25646
Isotype:	Ig Fraction
Predicted Reactivity:	B, Pr
Purification:	This antibody is purified through a protein A column, followed by peptide affinity purification.

Target Details

Target:	YPEL5
Alternative Name:	YPEL5 (YPEL5 Products)

Target Details

Molecular Weight:	13842
Gene ID:	51646
NCBI Accession:	NP_001120871 , NP_001120872 , NP_001120873 , NP_057145
UniProt:	P62699

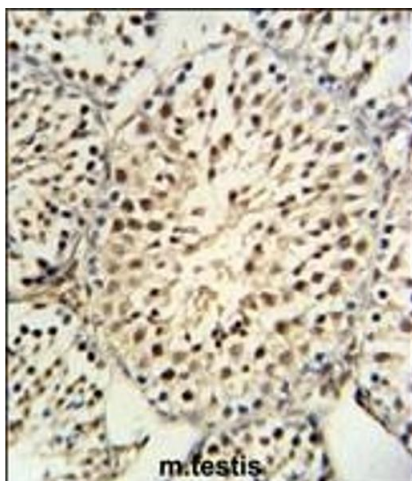
Application Details

Application Notes:	WB: 1:1000. WB: 1:1000. IHC-P: 1:50~100
Restrictions:	For Research Use only

Handling

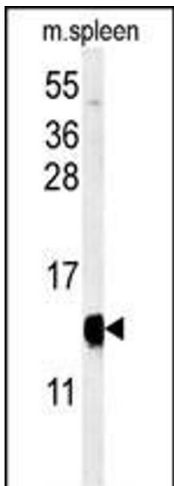
Format:	Liquid
Buffer:	Purified polyclonal antibody supplied in PBS with 0.09 % (W/V) sodium azide.
Preservative:	Sodium azide
Precaution of Use:	This product contains Sodium azide: a POISONOUS AND HAZARDOUS SUBSTANCE which should be handled by trained staff only.
Storage:	4 °C, -20 °C
Storage Comment:	Maintain refrigerated at 2-8 °C for up to 6 months. For long term storage store at -20 °C in small aliquots to prevent freeze-thaw cycles.
Expiry Date:	6 months

Images



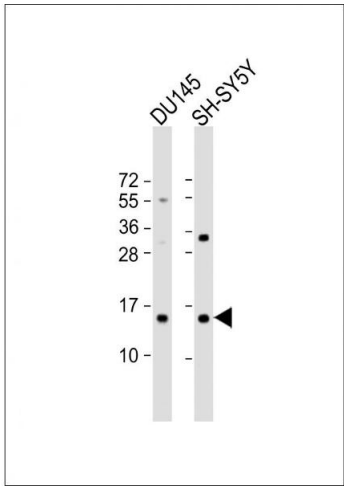
Immunohistochemistry (Paraffin-embedded Sections)

Image 1. YPEL5 Antibody (C-term) (ABIN653916 and ABIN2843151) IHC analysis in formalin fixed and paraffin embedded mouse testis tissue followed by peroxidase conjugation of the secondary antibody and DAB staining. This data demonstrates the use of the YPEL5 Antibody (C-term) for immunohistochemistry. Clinical relevance has not been evaluated.



Western Blotting

Image 2. Western blot analysis of YPEL5 Antibody (C-term) (ABIN653916 and ABIN2843151) in mouse spleen tissue lysates (35 µg/lane). YPEL5 (arrow) was detected using the purified Pab.



Western Blotting

Image 3. All lanes : Anti-YPEL5 Antibody (C-term) at 1:1000 dilution Lane 1: D whole cell lysate Lane 2: SH-SY5Y whole cell lysate Lysates/proteins at 20 µg per lane. Secondary Goat Anti-Rabbit IgG, (H+L), Peroxidase conjugated at 1/10000 dilution. Predicted band size : 14 kDa Blocking/Dilution buffer: 5 % NFDM/TBST.