

Datasheet for ABIN653924
anti-SUMF1 antibody (C-Term)[Go to Product page](#)

3 Images

Overview

Quantity:	400 µL
Target:	SUMF1
Binding Specificity:	AA 303-331, C-Term
Reactivity:	Human
Host:	Rabbit
Clonality:	Polyclonal
Conjugate:	This SUMF1 antibody is un-conjugated
Application:	Western Blotting (WB), Flow Cytometry (FACS), Immunohistochemistry (Paraffin-embedded Sections) (IHC (p))

Product Details

Immunogen:	This SUMF1 antibody is generated from rabbits immunized with a KLH conjugated synthetic peptide between 303-331 amino acids from the C-terminal region of human SUMF1.
Clone:	RB23824
Isotype:	Ig Fraction
Predicted Reactivity:	B
Purification:	This antibody is purified through a protein A column, followed by peptide affinity purification.

Target Details

Target:	SUMF1
---------	-------

Target Details

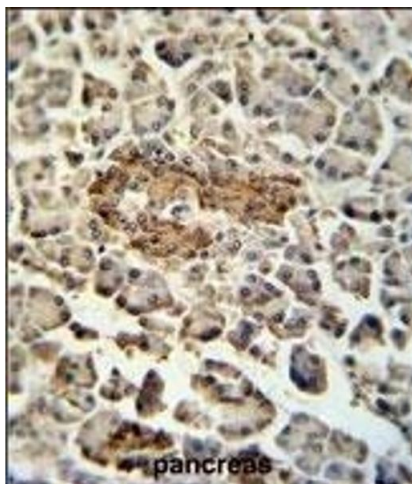
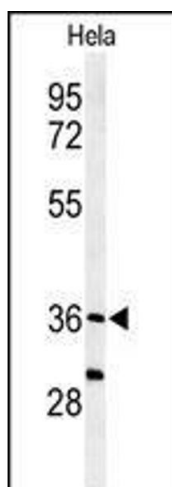
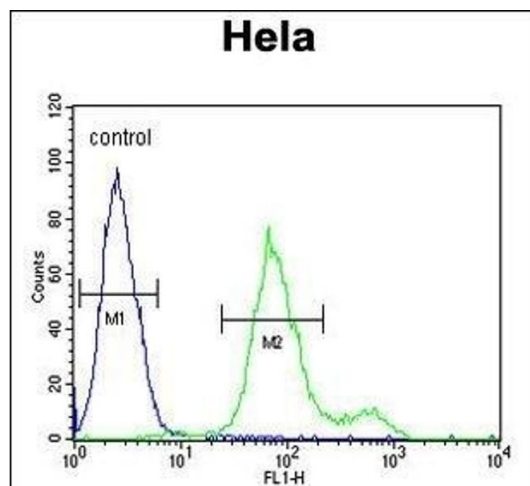
Alternative Name:	SUMF1 (SUMF1 Products)
Background:	SUMF1 encodes an enzyme that catalyzes the hydrolysis of sulfate esters by oxidizing a cysteine residue in the substrate sulfatase to an active site 3-oxoalanine residue, which is also known as C-alpha-formylglycine.
Molecular Weight:	40556
Gene ID:	285362
NCBI Accession:	NP_001158146 , NP_001158147 , NP_877437
UniProt:	Q8NBK3

Application Details

Application Notes:	WB: 1:1000. IHC-P: 1:50~100. FC: 1:10~50
Restrictions:	For Research Use only

Handling

Format:	Liquid
Buffer:	Purified polyclonal antibody supplied in PBS with 0.09 % (W/V) sodium azide.
Preservative:	Sodium azide
Precaution of Use:	This product contains Sodium azide: a POISONOUS AND HAZARDOUS SUBSTANCE which should be handled by trained staff only.
Storage:	4 °C,-20 °C
Storage Comment:	Maintain refrigerated at 2-8 °C for up to 6 months. For long term storage store at -20 °C in small aliquots to prevent freeze-thaw cycles.
Expiry Date:	6 months



Flow Cytometry

Image 1. SUMF1 Antibody (C-Term) (ABIN653924 and ABIN2843158) flow cytometric analysis of HeLa cells (right histogram) compared to a negative control cell (left histogram). FITC-conjugated goat-anti-rabbit secondary antibodies were used for the analysis.

Western Blotting

Image 2. Western blot analysis of SUMF1 Antibody (C-Term) (ABIN653924 and ABIN2843158) in HeLa cell line lysates (35 μ g/lane). SUMF1 (arrow) was detected using the purified Pab.

Immunohistochemistry (Paraffin-embedded Sections)

Image 3. SUMF1 Antibody (C-Term) (ABIN653924 and ABIN2843158) immunohistochemistry analysis in formalin fixed and paraffin embedded human pancreas tissue followed by peroxidase conjugation of the secondary antibody and DAB staining. This data demonstrates the use of the SUMF1 Antibody (C-Term) for immunohistochemistry. Clinical relevance has not been evaluated.